

Local Care in Practice

Developing locally based teams, working in a multi-disciplinary way centred around GPs

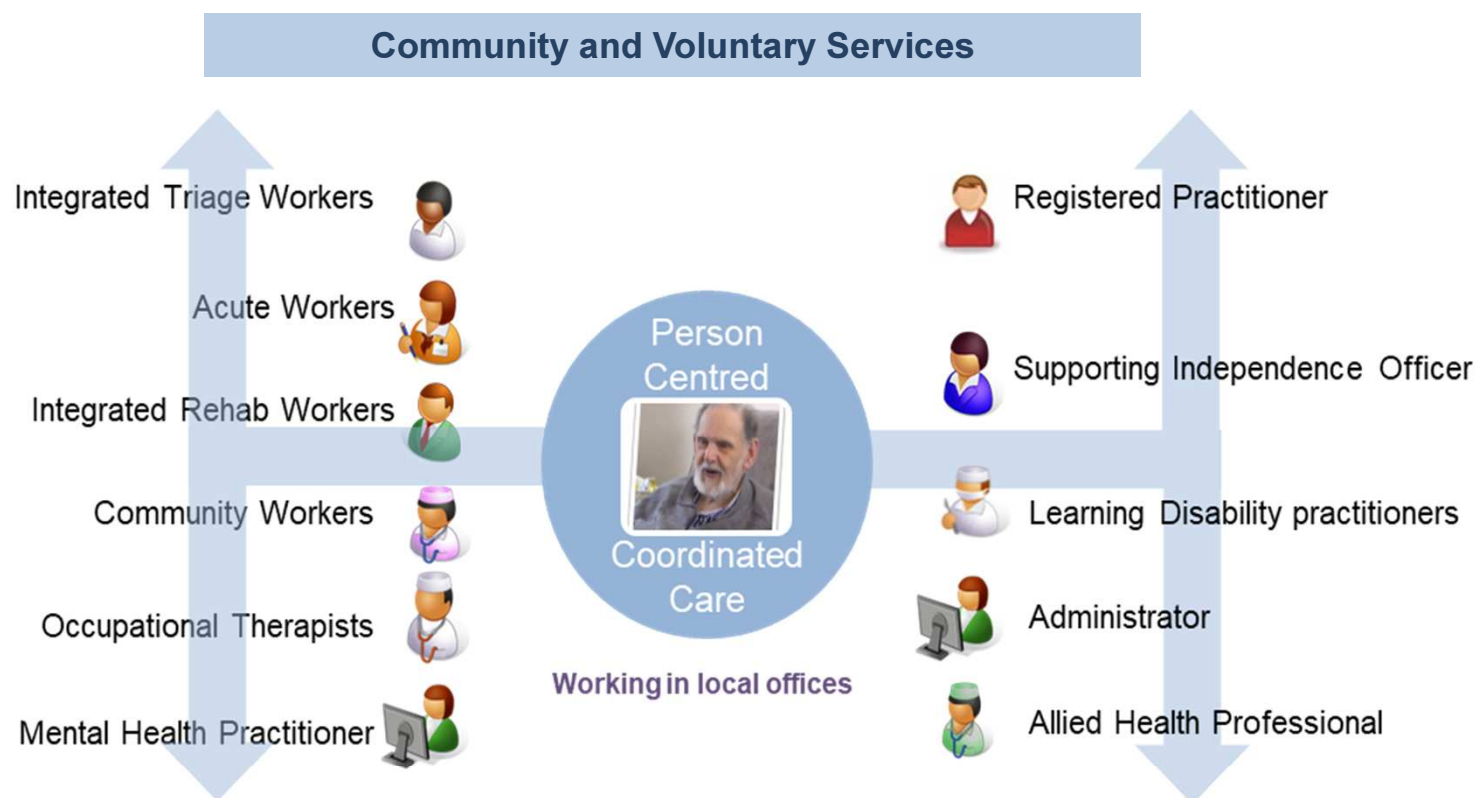
£32m additional spend to support increased workforce and changes in how workforce delivers services

Creation of Hubs – buildings that bring services together enabling improved out of hospital care

Better use of the voluntary sector through schemes that guide people through the health and social care system, providing information and advice, signposting to services that support their wellbeing

Supported by the Kent and Medway Care Record

Integrated Multi Disciplinary Teams



Specialist intervention will available for teams:



GP Primary Care Networks

