

Appendix 1: Detailed scoring table for options appraisal

Criteria	Options (see maps below)					
	Option 1 3-unitary	Option 2 4-unitary	Option 3 4-unitary	Option 4 4-unitary	Option 5 2-unitary	Option 6 1-unitary (Benchmark)
A. A proposal should seek to achieve for the whole of the area concerned the establishment of a single tier of local government	3	1	2	1	4	5
Sensible economic areas with an appropriate tax base, no undue advantage for one part of the area	4	1	2	2	4	5
Sensible geography which will help to increase housing supply and meet local needs	2	2	2	1	3	4
B. Unitary local government must be the right size to achieve efficiencies, improve capacity and withstand financial shocks	3	1	1	1	4	3
Population of 500,000 or more	5	2	2	2	2	1
Delivers efficiencies and best possible value for money for taxpayers	3	1	1	1	4	5
Transition costs are manageable	2	1	1	1	4	5
Opportunities for transformation from existing budgets and invest-to-save projects	4	2	2	2	5	3
Debt is manageable within the new structures	2	2	2	1	4	5
C. Unitary structures must prioritise the delivery of high-quality and sustainable public services to citizens	4	2	2	2	4	4
Will improve local government and service delivery and avoid unnecessary fragmentation of services	3	2	2	2	4	5
Provides opportunities to deliver public service reform, including where this will lead to better value for money	5	2	2	1	3	2

Criteria	Options (see maps below)					
	Option 1 3-unitary	Option 2 4-unitary	Option 3 4-unitary	Option 4 4-unitary	Option 5 2-unitary	Option 6 1-unitary (Benchmark)
Manages impacts for crucial services - social care, children's services, SEND and homelessness, and for wider public services including for public safety	3	2	2	2	4	5
D. Proposals should show how councils in the area have sought to work together in coming to a view that meets local needs and is informed by local views	4	2	2	2	2	2
Supported by partners and residents	4	2	2	2	3	2
Sensitive to issues of local identity and cultural and historic importance	4	2	3	3	2	2
E. New unitary structures must support devolution arrangements	5	2	2	2	2	1
Will help unlock devolution	5	2	2	2	2	1
Sensible population size ratios between local authorities and any strategic authority, with timelines that work for both priorities	5	2	2	2	2	1
F. New unitary structures should enable stronger community engagement and deliver genuine opportunity for neighbourhood empowerment	3	3	4	4	2	2
Total score	22	11	13	12	18	17

Scoring

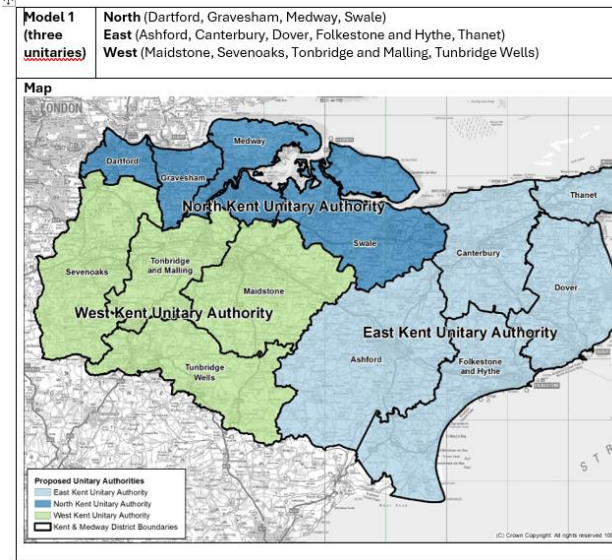
- | | |
|------------------------------------|---------------------------------|
| 5: Entirely meets the criteria | 2: Partially meets the criteria |
| 4: Strongly meets the criteria | 1: Does not meet the criteria |
| 3: Sufficiently meets the criteria | |

Notes on scoring:

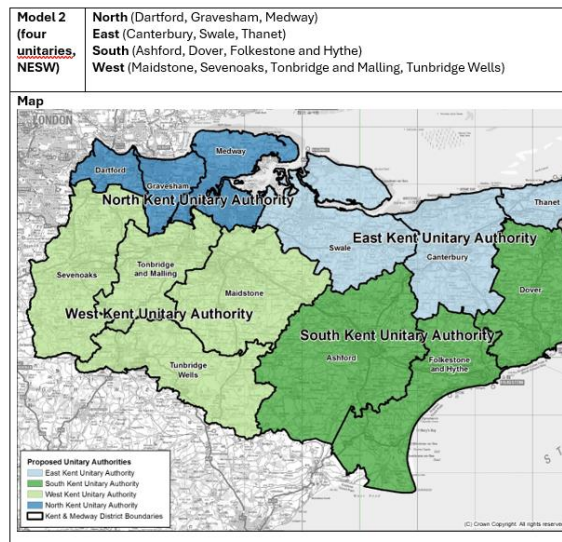
- The 6 criterion (A, B, C..) are taken directly from the Government criteria.
- The sub-criteria are interpreted from the Government criteria.
- Sub-criteria were scored only to inform the judgement on the overall score for each criterion.
- Due to the nature of the criteria, scoring is subjective.

Options included in the options appraisal:

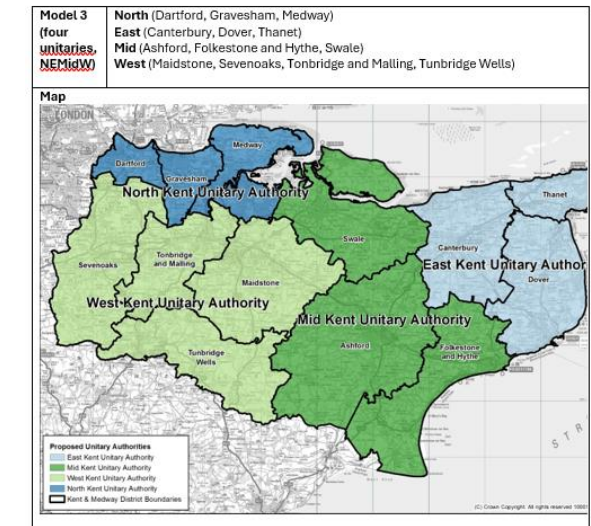
Option 1



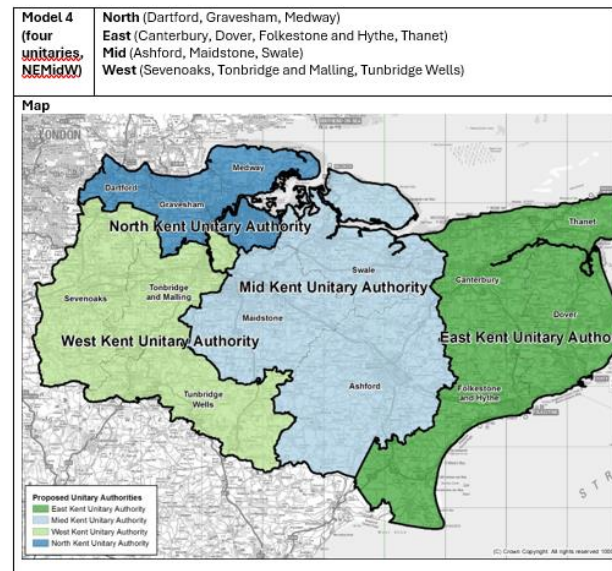
Option 2



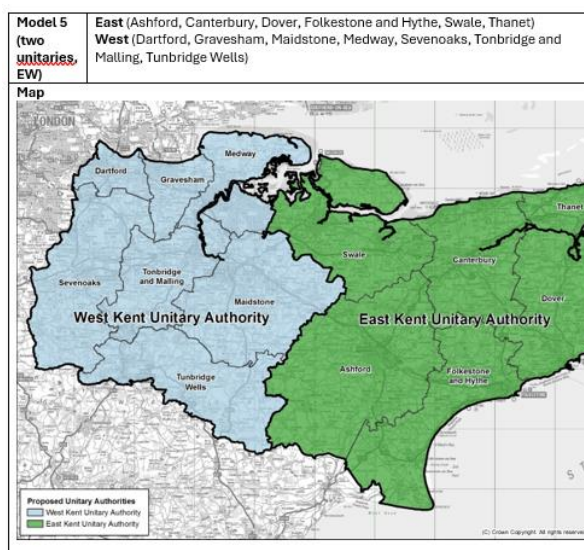
Option 3



Option 4



Option 5



Option 6 (Benchmark)

