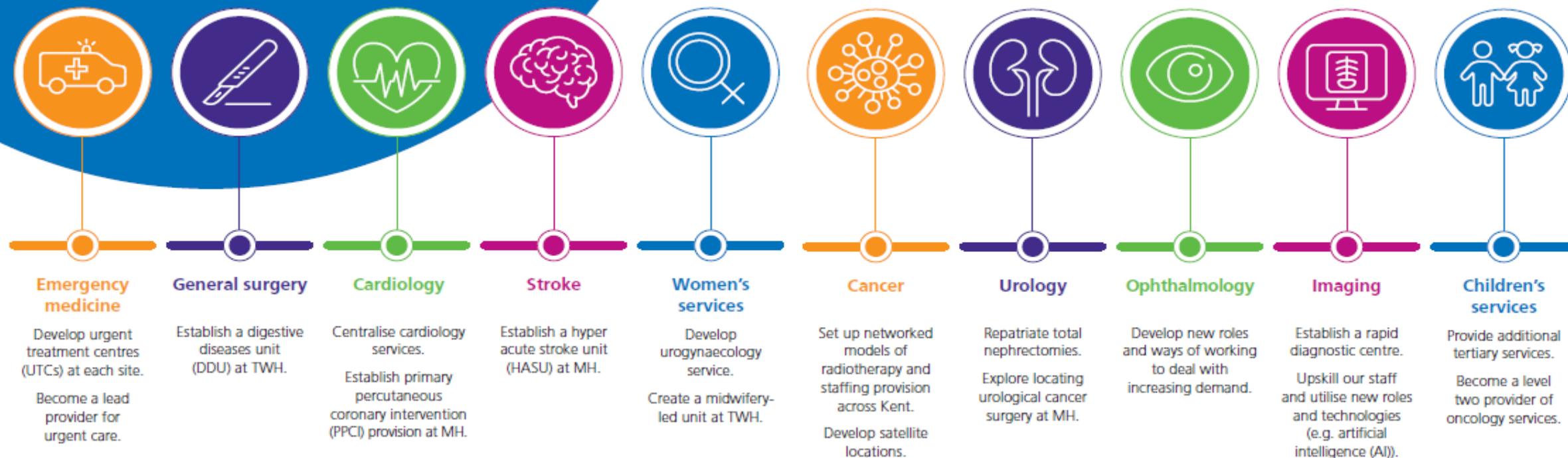


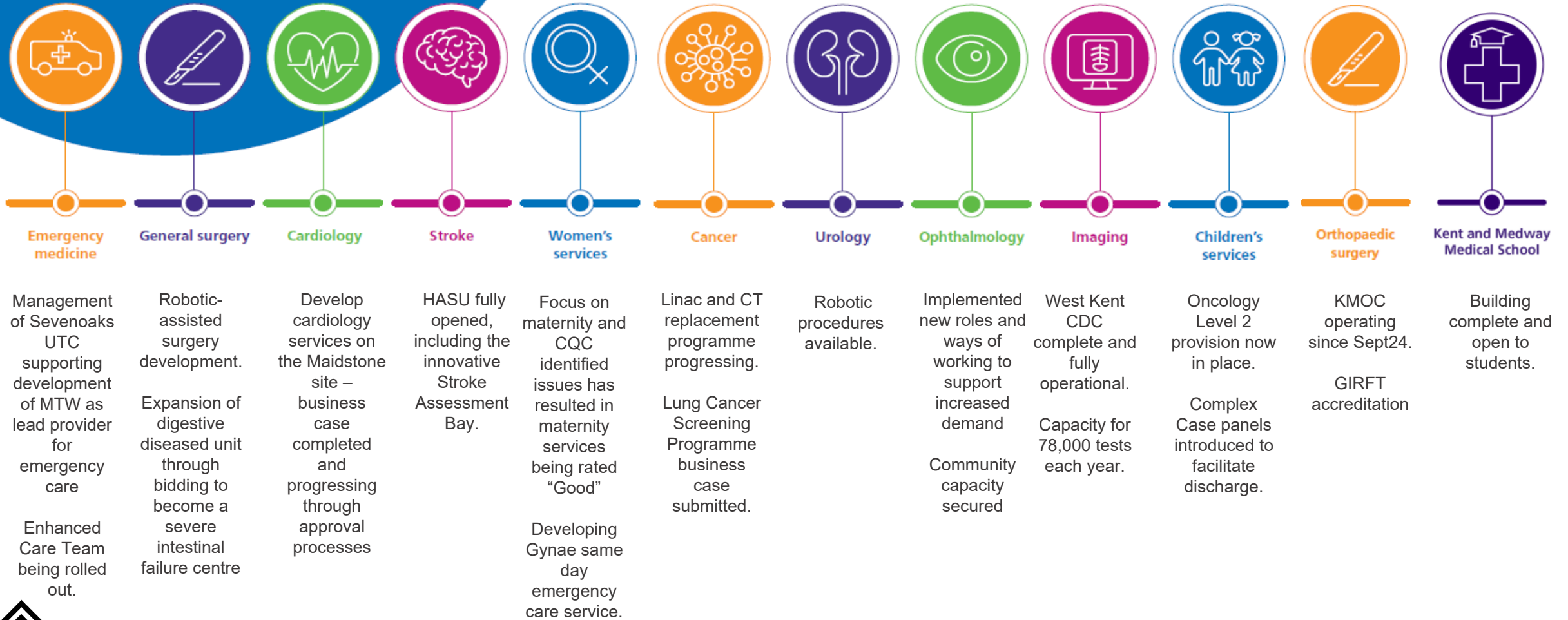
MTW Clinical Strategy - original



We are progressing our ambitious clinical strategy that will see our hospitals develop deeper specialist services

Exceptional people,
outstanding care

MTW Clinical Strategy – update August 2025



Acquisition of Fordcombe Hospital has increased capacity enabling MTW to provide care for more patients and support some of the longest waiting patients across Kent and Medway

Exceptional people,
outstanding care

MTW Clinical Strategy – plan vs delivery

- We have already delivered the vast majority of our original plans for our clinical strategy and have also been successful in responding to additional opportunities to develop:
 - Robotic surgery at Maidstone and Tunbridge Wells sites
 - An enhanced care team to support improved mental health and well-being for our patients
 - Achieving a good CQC rating for our maternity services following a significant improvement programme
 - Implementing same day emergency care services across a range of specialties
 - Build and opening of the Kent & Medway Orthopaedic Centre in Maidstone
 - Build and opening of a 147 room and academic centre for K&M medical students at Tunbridge Wells
 - Acquisition and the development of services at Fordcombe Hospital

MTW Clinical Strategy – *developing the strategy into 2030*

We have begun refreshing our organisational strategy and this will inform development and refreshing of our clinical (and other) strategies.

Working with partners this strategy will describe the key changes we want to make to improve services for our patients, taking into account how MTW:

- Plays a full role in elective care recovery for Kent & Medway patients.
- Contributes to the three big shifts indicated within the 10 year health plan of providing more care a community setting, moving from digital to analogue and a shift in focus from sickness to prevention.
- Responds to the NHSE medium term plan requirements.
- Aligns with K&M commissioning intentions.