

Public Consultation Document
**Consultation on the proposed
relocation of Grange Park School
to Wrotham School**



Date of Public Meeting:

To be held on Monday 7th July 2008 at 7pm

Venue for Public Meeting:

Wrotham School, Borough Green Road, Wrotham, Sevenoaks
TN15 7RD

Kent County Council would like to hear your views

This consultation document is available on:
<http://www.kent.gov.uk/education-and-learning/about-education-service/consultations>



INTRODUCTION

As part of a review of special schools in Kent, Grange Park School in Leybourne Grange, Leybourne, West Malling, was re-designated in 2004 from being a school for pupils with 'Severe, Profound and Multiple Learning Difficulties', to become a provision for young people with 'Severe Communication Needs associated with a combination of Autism and Severe Learning Difficulties'. Its capacity remained unchanged at 55 places and its age range continued to be 11 to 16. In addition, Grange Park has post-16 provision based at Holmesdale School in Snodland. There are currently 68 pupils on roll at Grange Park School (April 2008), of whom 53 attend the 11-16 provision while 15 attend the Post 16 provision at Holmesdale. Pupils who attend Grange Park come from West Kent and parts of Mid Kent. *A map is attached on page 4, which highlights the area from which pupils travel to Grange Park.*

Grange Park School is currently located in Leybourne Grange, Leybourne, West Malling. Its thirty year old buildings are unsuitable for the school's new designation and there is insufficient space on the site to redevelop them in the way which is required. The school has recently experienced the temporary loss of some of its utility services due to work on the adjacent Leybourne housing development. The relocation of Grange Park School to the Wrotham School site would create an opportunity to provide pupils and staff with new, purpose-built accommodation.

WHAT IS BEING PROPOSED?

Kent County Council is consulting on the proposed relocation of Grange Park School from its existing premises in Leybourne Grange, Leybourne, West Malling to new state-of-the-art buildings on the Wrotham School site in Borough Green Road, Sevenoaks. The Local Authority has been engaged in lengthy discussions with the Headteacher and Governing Body of Grange Park School regarding the school's relocation. The proposed move to Wrotham is the outcome and is supported in principle by governors of both Grange Park and Wrotham schools and by KCC.

WHAT IS BEING PROPOSED? Cont/d.

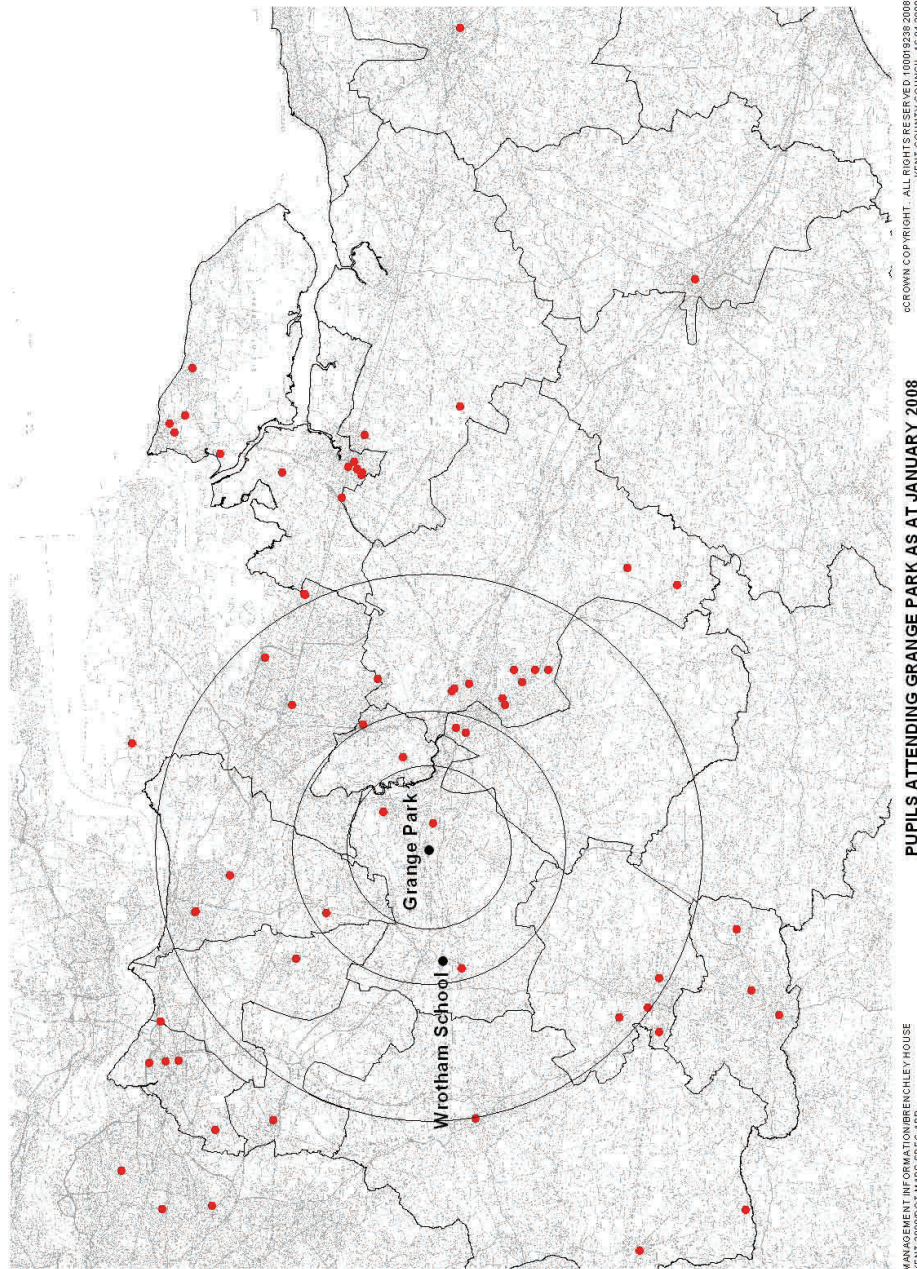
The new school would be built to cater for 55 boys and girls between the ages of 11 to 16 years, with post-16 provision continuing to be provided at Holmesdale Technology College. The intention would be to complete the new buildings between September 2009 and January 2010, but to aim for the earliest possible date within this timescale. Building work would therefore need to begin early in 2009. Grange Park School would continue to admit pupils at its existing site while the new buildings were under construction, and pupils and staff would subsequently transfer to the new building.

It is recognised that Wrotham School lies within the Green Belt. Kent County Council would therefore work closely with Tonbridge & Malling Borough Council planners to ensure that the new Grange Park School complied with all necessary planning and transport requirements.

The proposed relocation of Grange Park School would not affect the operation of Wrotham School and would leave the secondary school sufficient playing space to meet its requirements. Grange Park School would be a separate and self-contained school with its own headteacher, governing body and staff, although the headteachers of both schools are keen to develop opportunities for collaboration where this can be to their mutual benefit.

Three potential locations for the new school have been identified on the Wrotham school site (see site map). Kent County Council commissioned Jacobs Babbie to carry out feasibility studies on each of the three locations. Grange Park and Wrotham schools will, in consultation with KCC and other relevant parties, decide which location would best suit the needs of their pupils. The site which currently appears likely to be preferred is shown as site 1 on the site map and lies to the north of Wrotham School. Further investigations are, however, required before the proposed location can be finalised.

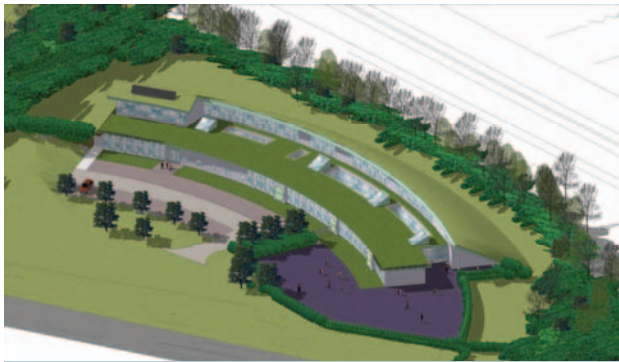
MAP SHOWING WHERE GRANGE PARK PUPILS TRAVEL INTO SCHOOL FROM



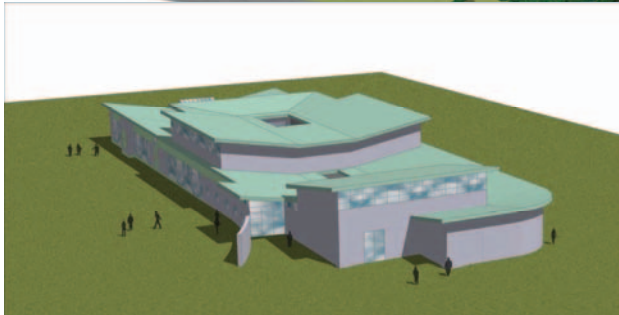
THE NEW SCHOOL

The new school would be designed to meet the specific needs of all Grange Park pupils. It would be environmentally friendly, built as a stand-alone building and designed with all the necessary facilities to be able to meet the requirements of the curriculum now and in the future.

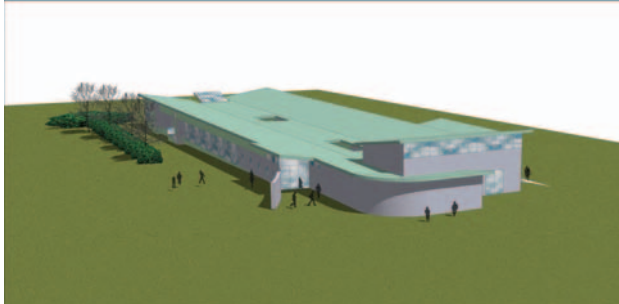
Artist impressions of what the buildings may look like for each of the three possible locations are shown below.



SITE 1



SITE 2



SITE 3

HOW TO GIVE YOUR VIEWS

We would like to know your views on this proposal, you can respond to the consultation by either:

Completing and returning the attached response form to:

Chris Jones, Area Education Officer, Mid Kent Education Office,
Kroner House, Eurogate Business Park, Ashford, Kent, TN24
8XU

Deadline for response forms is 1 August 2008

or

**By attending the public meeting at Wrotham School, Borough
Green Road, Wrotham, Sevenoaks on Monday 7th July 2008 at
7pm.**

An elected member of Kent County Council will Chair this meeting, at which all interested parties will have an opportunity to put forward their views. Officers from the Local Authority will also be present to clarify points of detail.

or

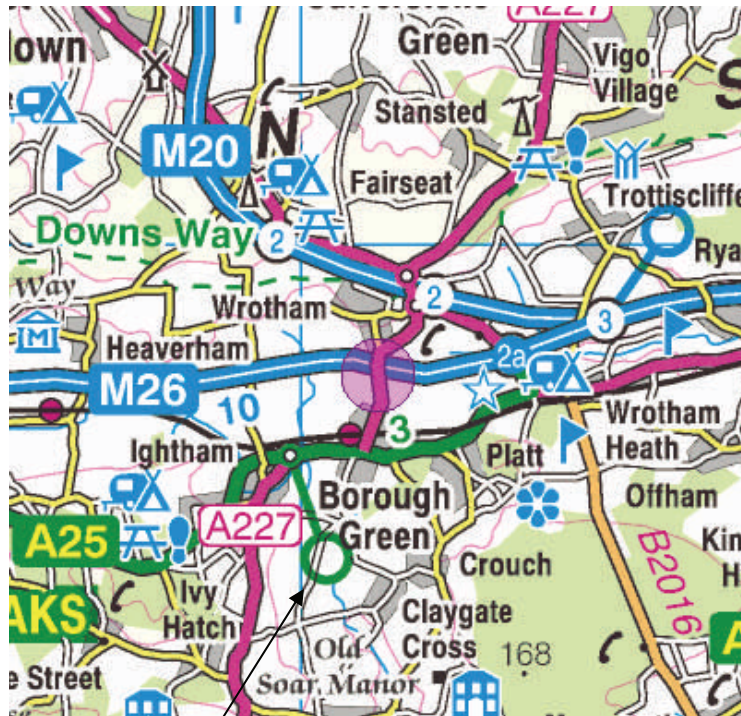
Sending an Email to: school.consultations@kent.gov.uk

**Dr Ian Craig
Director (Operations)
Children Families, Health and Education
Kent County Council
20 June 2008**

CONSULTATION TIMETABLE

Public Consultation begins	20 June 2008
Public Meeting to be held at Wrotham School, Borough Green Road, Wrotham, Sevenoaks	7 July 2008
Closing date for responses to consultation	1 August 2008
School Organisation Advisory Board	11 September 2008
Cabinet Member decision to issue a Public Notice	8 October 2008
Approximate dates to issue the public notice	End October/early November to December 2008
Determination by Local Authority	December 2008
Adjudication (if required)	Early 2009
Proposed implementation	1 September 2009 or as early as possible thereafter

PUBLIC MEETING VENUE



**Directions to Wrotham School, Borough Green Road,
Wrotham, Sevenoaks TN15 7RD**

- Leave the M26 at junction 2a
- Take A20 towards Brands Hatch
- At first roundabout, take the A227 towards Borough Green (first exit)
- Follow the A227 for about 200 metres. Wrotham School's entrance is on the left, just after passing over the M26



Public Consultation Response Form

Proposal to relocate Grange Park School to Wrotham School, Sevenoaks.

PLEASE RETURN THIS RESPONSE FORM NO LATE THAN 1 AUGUST 2008

To: Chris Jones, Area Education Officer
Mid Kent Area Education Office
Kroner House
Eurogate Business Park
Ashford
Kent TN24 8XU Fax: (01233) 898500

Do you agree with the proposal?

YES

NO

Parent/carer of a
pupil at Grange
Park School

A member of staff at
Grange Park School

A governor of
Grange Park
School

A pupil at Grange
Park School

Other interested
party

Name of other interested party:

Parent/carer of a
pupil at Wrotham
School

A member of staff at
Wrotham School

A governor of
Wrotham School

A pupil at Wrotham
School

Other interested
party

Name of other interested party:

Name:

Address:

Kent County Council is a data controller under the Data Protection Act 1998 and will comply with the requirements of the Act at all times. We will ensure that your personal information is processed fairly and lawfully and in this instance used only for the purpose of validation, which will enable a fair and just consultation.

PLEASE WRITE YOUR COMMENTS OVERLEAF

My comments are as follows:



This document is available on:
<http://www.kent.gov.uk/education-and-learning/about-education-service/consultations>
If you require this document in another format, please contact the Education Office.

My comments are as follows Continued...

This document is available on:

<http://www.kent.gov.uk/education-and-learning/about-education-service/consultations>

If you require this document in another format, please contact the Education Office.