

To: Customer & Communities Policy Overview and Scrutiny Committee

From: Mike Hill, Cabinet Member for Customer & Communities
Amanda Honey, Corporate Director, Customer & Communities

Date: 18 November 2011

Subject: Margate Task Force progress report

Classification: Unrestricted

Summary:

Policy and strategy work on Margate Task Force started in July 2009 as one of three key themes in Kent's Total Place submission. The resultant scoping exercise highlighted the disproportionate public services demands and expenditure (£110 million per annum) in Kent's two most deprived wards – Margate Central and Cliftonville West. An implementation model, primarily based on a 'Task Force' multi-agency team, was launched in September 2010. The following report reviews progress to date, challenges to delivery and priorities moving forward.

Members are asked to NOTE and COMMENT on the contents of this report.

1. Introduction and background

- 1.1 Margate Central and Cliftonville West are Kent's most deprived wards, comprising neighbourhoods (or Lower Super Output Areas) which, in the recent 2010 indices, have become further marginalised ranking 1st, 2nd and 3rd most disadvantaged of 5,319 in the South East (Appendix 1).
- 1.2 The following priorities were identified as a means of reversing a deep seated spiral of decline in the two wards and are addressed in turn in the next section (Appendix 2).
- Design and deliver **housing intervention** in a designated part of Cliftonville West affected by high levels of poor quality private rented accommodation (levels of 90% private sector housing in some streets compared to national average of 13%), population transience, crime and anti-social behaviour;
 - Provide stimulus to **work and skills** in the area with a focus on innovative programmes to engage individuals and families who generate significant costs on the welfare bill;
 - Promote **public service transformation** through new ways of joint working, targeting resources more effectively and reducing public sector costs, in particular policing;
 - Challenge and reduce **placements** of Looked After Children and vulnerable adults in Margate by other local authorities and London boroughs;
 - Tackle extreme **health inequalities** by improved multi-agency working and community development.

- 1.3 For Kent County Council, Thanet District Council, Kent Police and other statutory partners, the overarching long term objective is to reduce and close the gap between the inequalities and service demands in Margate Central and Cliftonville West, bringing about a community whose demography and needs are in line with the Kent average.
- 1.4 These priorities are at the core of Bold Steps and Vision for Kent:
- to grow the economy
 - to tackle disadvantage
 - to put citizens in control

2. Activity and progress to date

- 2.1 This section reviews activity, achievements and barriers to delivery across the Margate Task Force work strands. Baseline data, follow up measurement and progress against targets are provided where possible.

Margate Housing Intervention

- 2.2 Significant progress has been made in developing the framework for a 10-15 year housing intervention strategy in Cliftonville West. The Live Margate Housing Intervention Programme aims to provide quality family homes with a range of tenure and type. The programme will create an environment attractive to private sector investors and will provide opportunities for companies to get involved early in a rapidly improving housing market.
- 2.3 KCC has committed £10 million towards the investment programme and TDC £2 million. Discussions with the HCA are ongoing.

The programme will:

- invest public and private money in the targeted acquisition of property in Margate
- improve and refurbish houses to create family homes
- rent and manage property for a period until such a time that critical mass of improved properties has altered market perception
- sell homes back into owner occupation
- re-invest capital released from the sale of homes within the intervention area
- create a 'virtuous circle' of investment & re-investment

- 2.4 A housing intervention development plan is now active, drawn up by Thanet District Council, identifying priority properties and sites for acquisition and / or renewal. To date The Embassy and Leslie Hotels in Surrey Road have been purchased by TDC. The former is at planning application stage for conversion into two family homes, and design options are being considered for the latter.

- 2.5 A marketing booklet for the Housing Intervention will be published shortly as a means of attracting private investment into the area and raising awareness of public / private partnership opportunities.
- 2.6 Alongside property investment, enforcement action is a key aspect of the housing intervention and is being significantly stepped up. Four additional Housing Improvement Officers were recruited through KCC Performance Reward Grant (PRG) to enhance enforcement capacity.
- 2.7 In the six months since April 2011 140 enforcement notices have been served in the locality compared to 168 notices for the year April 2010 to March 2011, an indication of increased enforcement activity. One property in Godwin Road is subject to Compulsory Purchase Order (CPO) and will come under the ownership of TDC in mid October.
- 2.8 There has also been a focus on planning and enforcement issues relating to HMOs and other non-registered provisions delivering unregulated care for vulnerable people, which forms part of a wider multi-agency strategy with Adult Services.
- 2.9 Selective Licensing, a central tenet in Thanet District Council's strategy to deliver housing improvement in Cliftonville, came into force on 21st April 2011. The mandatory license requires landlords to adhere to defined property standards and tenancy referencing. Non compliance will result in legal and enforcement action including fines and compulsory purchase.
- 2.10 By the beginning of October 2011, 646 license applications had been received covering 1027 units of accommodation, and a fee income of £266,000. This significantly exceeds the target set to process 300 applications to the end of March 2012.
- 2.11 A judicial review has been lodged by Southern Landlords Association (SLA) to challenge Selective Licensing. TDC currently have 35 days to contest the notification, which, if it goes forward, will be heard in court before the end of December.

Employment and skills

- 2.12 There are a number of strategies and work streams to promote employment and skills in Margate.
 - TDC are in the process of recruiting an Economic Development Manager to drive forward the Employment and Skills agenda
 - Jobcentre Plus Margate Team Manager has identified all Jobseekers in the two wards who are targeted for focussed advice work and monitoring;
 - a dedicated JCP Adviser is supporting access to work and skills for families in the Community Budgets cohort;
 - Work Programme providers are now up and running in Thanet and taking referrals from JCP for long term claimants and those from vulnerable groups;
 - Opportunities for applications for Flexible Support and partnership funding from DWP to support people into work and being actively pursued.

Some examples of specific successes are:

- Two Jobs Fairs have been run in Thanet Gateway Plus, attracting 895 Job Seekers, and resulting in 203 'off-flows' from the JSA Register¹;
- KCC Supporting Independence Programme in conjunction with Libraries deliver a Work Club within the Gateway at which 27 people regularly attend, 5 of whom have been successful in gaining employment
- A job club and Ambassadors volunteer scheme targets A10 nationals seeking work, supported through the Migrant Impact Fund;
- An adviser will be co-located in Margate Probation Office from November to enhance work with offenders;
- Thanet Works projects, including job brokerage and outreach training and advice continue to be delivered, 176 people from these wards have participated in these projects so far;
- One of the Thanet Works projects, Art Works, saw Turner Contemporary delivering a programme of training designed to prepare local people to work in the Gallery, 15 participants successfully gained employment in the Gallery.
- KCC Vulnerable Learner scheme placed 2 young people from this area into apprenticeships
- KCC Thanet Apprenticeship Project supported an apprentice into an owner-operated business in Broadstairs, this business has subsequently opened a second shop in an empty unit in the Margate Task Force area, which the former apprentice is managing;

- 2.13 DWP data sharing restrictions have limited the extent to which work with Jobcentre Plus has been fruitful in a wider agency context, however these barriers are now being overcome through a layering of agreed protocols.
- 2.14 Appendix 3 provides trend data in welfare dependency and worklessness benefits in the district and two wards. The number of people claiming Jobseekers Allowance has increased by 660 across Thanet to 4587 in the past year, a third of this number (217) living in the two wards. This is a disproportionate increase to the overall district percentage of working age population in the area.
- 2.15 18-24 year olds comprised 28% of the total (1268) on the JSA register in Margate Central and Cliftonville West in September 2011, slightly less than the district average (32%).
- 2.16 Table 3d shows the number of 16-18 year olds not in education, employment or training in Thanet and the two wards since March 2010. There is a rising trend in unemployment among 16-24 year olds, in line with the national picture.

¹ JCP outcomes are monitored through "off flows" – people coming off benefits measured by claims which are closed. Job Fair (April 2011) resulted in 193 off flows in a 3 month period, of which 33 people re-signed. 160 people have remained off benefits. Job Fair (Sept 2011) - to date there have been 43 off flows but more are expected and will be tracked.

- 2.17 Against this backdrop, Connexions have achieved NEETs targets in Thanet which are set through contractual agreement with KCC. In September 2011 Thanet comprised 8.77% of Kent's total NEETs against a local target of 10.82% and a Kent target of 9.61%
- 2.18 Training provision and employment opportunities for 16-18 year olds in the area include:
- A series of Prince's Trust programmes to develop life skills and confidence
 - Range of taster and engagement courses run by providers – including a new partnership with Turner Contemporary
 - Apprenticeships, whose profile has been raised in the local area following both the KCC project, and the subsequent Thanet Works project. The KCC sponsored KEiBA Apprenticeship of the Year award was won by a Thanet firm who benefitted from the subsequent press coverage.
- 2.19 Table 3e. Thanet has the highest Housing Benefit claimant rate in the South East and is included in a government commissioned survey which is currently underway to examine the impact of Housing Benefit reform (see Appendix 8.6-8.7). Previously unavailable claimant data has been produced at ward level for Margate Task Force to monitor the potential effects of in-migration and an increase in welfare dependent households.

Margate Task Force Team and Multi-Agency Delivery

- 2.20 Substantial effort has gone into establishing a Task Force multi-agency team model since September 2010 (Appendix 4). The core team is based on an enforcement-led approach at a community level, complemented by swift access to partner support agencies.
- 2.21 To date staff deployed to the Task Force have remained line managed and based within their own service structures and are co-ordinated as part of the team.
- 2.22 Task Force activity since October 2010 is detailed in sections 2.22-2.24 and includes:
- Six Cleansweep Operations;
 - Fifteen Task Force led operations including Thanet District Council, Police, UK Border Agency and Kent Fire & Rescue;
 - Visits to 1,105 properties in the Cliftonville area through Your Home, Your Health (YHYH) housing improvement initiative, with successful completion of 378 full inspections (33% access rate);
 - Technical fire safety inspections of all communal areas as part of YHYH and referrals to Community Fire Safety for follow up within properties. One third of communal hallways have had significant fire safety deficiencies.

Streetscene enforcement

- 2.23 A large volume of enforcement activity against landlords and property owners has been undertaken by Thanet DC Streetscene Officers since October 2010 to deal with littering and fly-tipping. Anecdotal evidence suggests that environmental improvements have

been achieved, with greater residents' satisfaction levels. Further hard evidence will be collated to measure progress.

	Call outs	PDPA	Section 46
Margate Central	229	39	34
Cliftonville West	602	147	158
Total	831	186	192

Crime and anti-social behaviour

- 2.24 Between September 2010 and August 2011 crime in Thanet has reduced by 2.2% (Appendix 5), notably in less burglary and vehicle crime. Thanet's crime reduction target for April 2011-March 2012 is 2%.
- 2.25 The most recent year on year comparison for Margate Central and Cliftonville West (Table 5b) bucks this trend, showing an overall increase in crime of 8.3%. Cliftonville West persistently has the highest crime rate in the county and the largest numbers of young people known to the Youth Offending Service (YOS) live in the area (Appendix 6).
- 2.26 While burglary and car crimes are lower, there are significant increases in theft, shoplifting and violence against the person. Increase in offences is partially due to a review of crime reports to give a true picture of offences in the wards.
- 2.27 Between April 2010 and March 2011 there was an 18.49% reduction in young offenders across Kent and Thanet on the previous year (Table 6a). However, data for the period July 2010 to July 2011 shows an increase in young offenders living in Cliftonville West.
- 2.28 New entrants to the Youth Justice System has likewise declined Kent and Thanet-wide (table 6d). The number has reduced in Margate Central but remains constant in Cliftonville West (table 6e). Offences committed are however lower both district and across the tow wards (tables 6f & 6g).
- 2.29 Integrated Offender Management (IOM) is central to crime reduction strategies particularly as Thanet is home to the highest number of adult offenders in Kent. In June 2011 there were 762 statutory offenders living the district, half of whom were living in Margate & Cliftonville.

- 2.30 Within this context, there has been concerted Task Force policing activity. Since January 2011 the police team has arrested 118 individuals for a range of offences from breach of bail to grievous bodily harm and robbery. The 'positive disposal' rate for these offenders currently stands at 78%.
- 2.31 The team has worked to identify and remove non UK nationals from within the community who are wanted in their country of origin – arresting and removing three individuals to date on European Arrest Warrants. Request for a further three EAWs have been submitted.
- 2.32 Other enforcement includes:
- Tenant related anti-social behaviour (ASB), using a variety of methods in partnership with Thanet District Council to remove or reduce the disruption to other residents;
 - In addition 107 ASB cases have been dealt with by Thanet DC resulting in 67 ASB incident diaries issued to the public, 25 ASB warning letters and 19 Anti-Social Behaviour Agreements (ABAs);
 - Execution of drugs warrants;
 - Working with HM Customs and Excise illegal to tackle supply of non-duty paid alcohol;
 - Targeting of prostitution and brothels;
 - Working with Education Welfare Officers and local schools, which has identified over 150 children not attending school or without a school place.
- 2.33 Policing priorities include:
- Tackling sexual exploitation of children/Human trafficking and bonded service
 - Drug and alcohol misuse and impact on crime
 - Intra-European offender management
 - Social cohesion and community engagement, including the development of Neighbourhood Resolution Panels.
- 2.34 Developments are currently underway to significantly strengthen delivery effort on the ground and to achieve a swifter, more proactive multi-agency response to dealing with day to day demands on public services:
- Additional Police resources are to be deployed from mid-November to tackle the continued challenges in combatting crime and anti-social behaviour;
 - Thanet District Council have made a fourth floor annex available in the council offices for the co-location of multi-agency staff to improve information sharing, tactical planning and delivery;
 - Integration of IOM within Thanet Community Safety Unit and closer partnership working with Youth Offending Service and Probation as part of co-location will enhance crime reduction efforts;
 - A review of progress, activity planning and clear success criteria is underway with a view to mobilising and realigning further resources from partner agencies;

- Improved alignment of the Task Force with the housing intervention programme to pre-empt emerging needs at a neighbourhood level – a “team around the locality”.

Placement of Looked After Children

- 2.35 The number of children placed by other local authorities in Thanet and the two wards continues to remain high (Appendix 7). KCC Specialist Children’s Services Cabinet Member, Jenny Whittle, met Children’s Minister Tim Loughton in September to gain government commitment to pursuing Local Authorities who continue to place in Thanet and other parts of Kent.
- 2.36 Further work is required to look at accommodation and support of care leavers from other Local Authorities placed in Cliftonville and Margate, who are at high risk of teenage pregnancy, offending and worklessness.

Inward migration of vulnerable groups

- 2.37 Inward migration remains a significant factor contributing to the demographics and deprivation levels in Margate Central and Cliftonville West and there are a number of policy risk areas which require high level advocacy at government level (Appendix 8)
- 2.38 Increasing numbers of non UK Nationals from A10 Eastern European states are placing public services in Margate under significant pressure. An integrated strategy is needed to approach the problems faced by district and county councils, schools, police

- 2.39 and other agencies of the growing number of workless migrant families living in the area with no recourse or limited access to public funds. Work has started on this in conjunction with the South East Network for Migration and KCC Specialist Children's Services.

Health and addressing health inequalities

- 2.40 A separate piece of work is underway to review Health aims and objectives in Margate Central and Cliftonville West, updating baseline data and success criteria. Work is also in progress to improve the integration of health resources with the Task Force team model.
- 2.41 A focus on adults facing chronic exclusion is in development in partnership with Health, Adult Social Services and Mental Health, pulling together statutory and voluntary resources to support and monitor people at risk of slipping through the net.
- 2.42 Researchers from the University of Greenwich are currently completing a project on the health impacts on families with young children living in poor quality private sector housing in Cliftonville, which will provide evidence on which to further develop community based health initiatives.

3. National government policy context

- 3.1 There are a number of areas of emerging government legislation which present opportunities and threats to socio-economic regeneration efforts in Margate, including:
- Local Enterprise Partnerships (LEPs) and Enterprise Zones
 - Localism Bill
 - Welfare Reform Bill
 - Public Service Reform White Paper
 - Health and Social Care Bill
- 3.2 Further details of the current policy framework are set out in Appendix 8.

4. Resource Implications for KCC

- 4.1 KCC has pooled joint funding for Margate Task Force programme management role with Thanet District Council. £180K has been allocated to date, to cover a two year fixed term contract. This also supports full time administrative support.
- 4.2 £500K PRG funding was allocated to Thanet District Council in August 2010 to fund additional housing enforcement. A further £10 million is committed to the Housing Intervention initiative.
- 4.3 KCC directorates have aligned resources to the team effort as detailed in Appendix 4. KCC services primarily work through existing referral mechanisms in order to access resource in the area – for example Specialist Children's and Adult Services. At

operational management level, a range of KCC officers are fully engaged and involved in strategy work.

5. Recommendations

- 5.1 The scale and challenge of the work in Margate cannot be underestimated, nor the need for clear strategy and continued resource allocation towards the effort across KCC directorates and partners.
- 5.2 To note the contents of this report and its appendices in order to consider:
- core priorities of the work in Margate Central and Cliftonville West and progress to date;
 - delivery model, leadership and resources for addressing these priorities;
 - relationships with and expectations of partners;
 - opportunities and risks within coalition government policy in taking the effort forward.

Director:

Name: Angela Slaven

Job Title: Director of Service Improvement

Telephone Number: 01622 221696

Email: angela.slaven@kent.gov.uk

Contact Officer: Sara Woodward

Title: Programme Manager, Margate Task Force & Thanet Community Budget

Contact Number: 01843 577632

Email Address: sara.woodward@thanet.gov.uk

Appendices:

Appendix 1 Indices of Multiple Deprivation

Appendix 2 Margate Task Force Priorities

Appendix 3 Data: Worklessness and Welfare Dependency

Appendix 4 Margate task Force Team Structure

Appendix 5 Data: Crime

Appendix 6 Data: Youth Offending

Appendix 7 Data: Looked After Children and Care Leavers

Appendix 8 National Policy Framework – a summary

APPENDICES

APPENDIX 1

Table 1. Indices of Multiple Deprivation 2010 – Kent District Rankings & Trends

District-wide Trend						
District	Kent (ranking of 12)			England (ranking of 354)		
	2004	2007	2010	2004	2007	2010**
Thanet	1	1	1	85	65	49
Shepway	3	3	2	131	123	97
Swale	2	2	3	130	116	99
Dover	4	5	4	154	153	127
Medway	N/A	N/A	N/A	160	150	132
Gravesham	5	4	5	158	142	142
Canterbury	7	7	6	190	198	166
Dartford	6	6	7	170	186	175
Ashford	8	8	8	233	227	198
Maidstone	9	9	9	270	248	217
Tunbridge Wells	10	10	10	283	273	249
Tonbridge & Malling	12	11	11	304	281	268
Sevenoaks	11	12	12	303	295	276

** Due to Local Government reorganisation, 2010 national figures out of 326 LAs, not 354

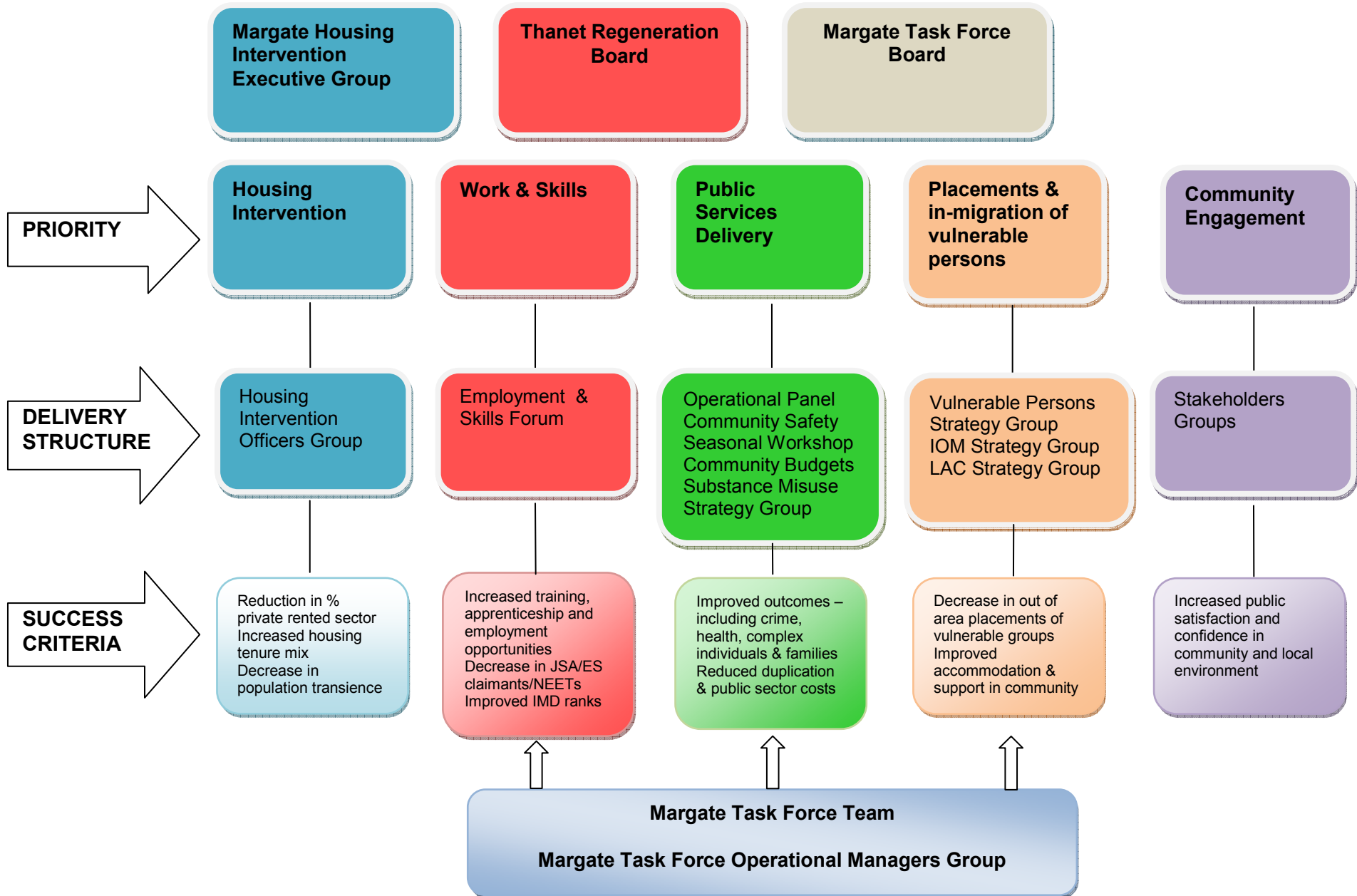
Table 2. Analysis of Margate Central & Cliftonville West by Lower Super Output Areas (LSOAs)

LSOA	Thanet (of 84)			Kent (of 1047)			South East (of 5319)			England (of 32482)		
	2004	2007	2010	2004	2007	2010	2004	2007	2010	2004	2007	2010
Margate Central (West)	1	2	1	1	2	1	1	2	1	357	192	22
Cliftonville West (North)	2	3	2	2	3	2	2	4	2	404	399	33
Margate Central (North)	3	1	3	3	1	3	9	1	3	829	167	81
Cliftonville West (East)	5	5	4	6	5	4	27	11	11	1777	670	339
Cliftonville West (Central)	4	4	5	5	4	7	21	9	18	1416	631	595

Source: The English Indices of Deprivation 2010

APPENDIX 2

MARGATE TASK FORCE 2011-12 PRIORITIES, DELIVERY STRUCTURE AND SUCCESS CRITERIA



APPENDIX 3

Worklessness and Welfare Dependency

Table 3a. Number of Newly Unemployed People Claiming Jobseekers Allowance

Newly Unemployed			
	Sept 2010	April 2011	Sept 2011
Thanet	830	960	awaited
Cliftonville West	120	130	awaited
Margate Central	80	90	awaited

Table 3b. Number of People Claiming Jobseekers Allowance

JSA Register			
	Sept 2010	April 2011	Sept 2011
Thanet	3927	4382	4587
Cliftonville West	679	757	820
Margate Central	372	436	448

Table 3c. Number of 18-24 Year Olds Claiming Jobseekers Allowance

JSA Register 18-24 Year Olds			
	Sept 2010	April 2011	Sept 2011
Thanet	1130	1265	1490
Cliftonville West	185	200	235
Margate Central	105	135	130

Source: NOMIS

Table 3d. Number of 16-18 Year Olds Not in Education, Employment or Training (NEET)

16-18 Year Old NEETs				
	March 2010	Sept 2010	March 2011	Sept 2011
Thanet	292	251	323	338
Cliftonville West	40	43	50	55
Margate Central	25	29	27	32

Source: Connexions October 2011

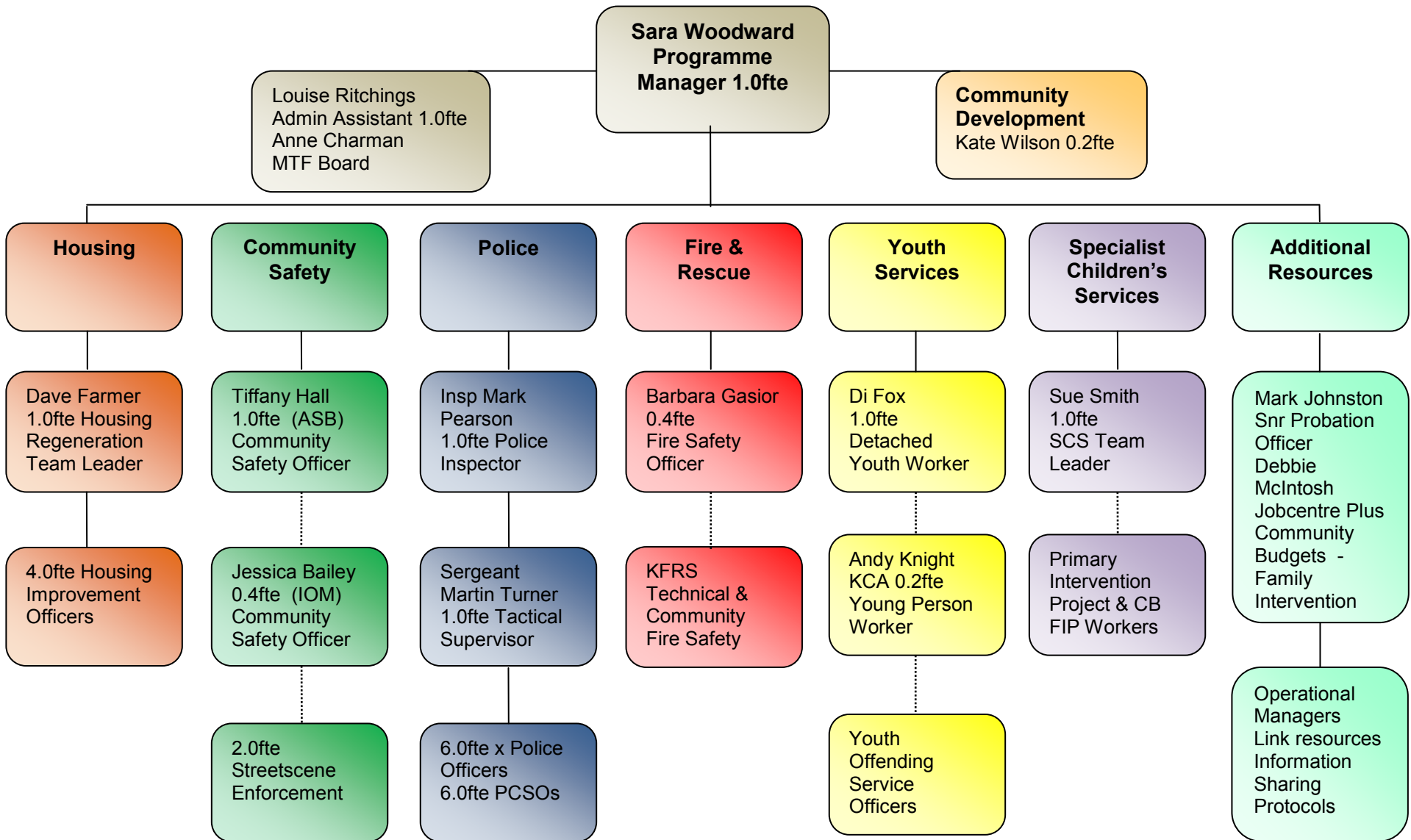
Table 3e. Households claiming Housing Benefit

Number of Households Claiming Housing Benefit			
	October 2009	October 2010	October 2011
Thanet	18533	19386	19924
Cliftonville West	u/a	u/a	2435
Margate Central	u/a	u/a	1585

Source: Revenue & Benefits, East Kent Services (October 2011)

APPENDIX 4

MARGATE TASK FORCE – TEAM STRUCTURE AND SWIFT ACCESS TO MULTI-AGENCY RESOURCES



APPENDIX 5

Table 5a. Crime and Incidents in Thanet: September 2010 to August 2011

THANET	Sept-Aug 2009	Sept-Aug 2010	Sept-Aug 2011	Number Difference	% Difference	Per 1000 Population	County Position
All crime	10908	10882	10646	-236	-2.2%	80.55	13
Burglary Dwelling	764	983	736	-247	-25.1%	12.61	13
Burglary Other	502	642	609	-33	-5.1%	4.61	8
Robbery	131	109	135	26	23.9%	1.02	13
Violence Against the Person	2662	2117	2303	186	8.8%	17.42	13
Sexual Offences	172	141	133	-8	-5.7%	1.01	13
Violent Crime	2965	2367	2571	204	8.6%	19.45	13
TFMV	660	785	661	-124	-15.8%	5.00	11
TOMV	273	210	154	-56	-26.7%	1.17	6
Vehicle Crime	933	995	815	-180	-18.1%	6.17	10
Criminal Damage	2344	2374	2146	-228	-9.6%	16.24	13
Theft & Handling Stolen Goods	2605	2760	2802	42	1.5%	21.20	12
Drug Offences	302	307	435	128	41.7%	3.29	13
Fraud & Forgery	267	232	345	113	48.7%	2.61	9
Deliberate Primary Fires	96	108	80	-28	-25.9%	6.05	9
Deliberate Secondary Fires	213	119	191	72	60.5%	14.45	11
DA: Number of incidents	2508	2469	2719	250	10.1	26.26	13
DA: Number of Repeat Victims	u/a	587	652	65	11.1%	6.30	13
DA: % of Repeat Victims	u/a	23.8%	24.0%	0.2			8
Offences Committed Against All Victims	n/a	9250	8559	-691	-7.5%	64.76	13
Offences Against Repeat Victims	n/a	1789	1699	-90	-5.0%	12.85	13
Repeat Victim Rate	n/a	19.3%	19.9%	0.6			12

Source: KCC Community Safety Unit: Rolling Year Performance Exceptions Report August 2011

APPENDIX 5

Table 5b. Crime and Incidents in Margate Central & Cliftonville West: April to September 2011 Compared to April-September 2010

Ward	All Crime April-Sept 2011	Number Difference	% Difference
Cliftonville West	795	69	9.5%
Margate Central	767	51	7.1%
Total	1562	120	8.3%
To achieve 2% reduction for year	1350	212	16.0%
% of District Crime (reduce to 23%)		27.4%	4.4%
Category	April-Sept 2011	Number Difference	% Difference
Burglary Dwelling	129	-27	-17.3%
Burglary Other	49	-42	-46.2%
Criminal Damage	278	19	7.3%
Drug Offences	49	-10	-16.9%
Fraud and Forgery	33	9	37.5%
Other Crime (misc.)	23	---	---
Robbery	31	15	93.8%
Sex Offences	21	16	320.0%
Shoplifting	160	45	37.9%
Theft From Motor Vehicle	69	-20	-22.5%
Theft	273	70	34.5%
Theft of Motor Vehicle	20	3	17.6%
Theft of Pedal Cycle	31	7	29.2%
Vehicle Interference	5	-6	-54.5%
Violence against the Person	391	42	12.0%

Source: Margate Task Force Police Update 7/10/11 – provisional data

APPENDIX 6

Youth Offending

Table 6a. Offender Profile by District and Gender

District	April 2009 to March 2010			April 2010 to March 2011			% Change
	Female	Male	All	Female	Male	All	
Ashford	71	177	248	44	136	180	-27.4%
Canterbury	55	158	213	52	144	196	-7.98%
Dartford	48	152	200	36	122	158	-21.00%
Dover	96	214	310	73	172	245	-20.97%
Gravesham	68	175	243	46	185	231	-4.94%
Maidstone	101	220	321	46	182	228	-28.97%
Sevenoaks	43	116	159	26	78	104	-34.59%
Shepway	93	193	286	62	180	242	-15.38%
Swale	126	264	390	75	200	275	-29.49%
Thanet	112	299	411	60	275	335	-18.49%
Tonbridge & Malling	65	142	207	53	149	202	-2.42%
Tunbridge Wells	41	106	147	38	111	149	1.36%
No Fixed Abode	0	4	4	1	6	7	n/a
Out of County	123	327	450	95	268	363	-19.33%
Unknown	0	1	1	1	1	2	n/a
Total	1042	2548	3590	708	2209	2917	-18.75%

APPENDIX 6

Table 6b. Offender Profile Top 10 Wards in Kent July 2009 to June 2010

Ward	Female	Male	Total
High Street (Maidstone)	11	37	48
Shepway North (Maidstone)	10	34	44
Ciftonville West (Thanet)	9	34	43
Buckland (Dover)	13	24	37
Folkestone Foord (Shepway)	11	26	37
Dane Valley (Thanet)	12	24	36
Maxton, Elms Vale and Priory (Dover)	16	20	36
Swanscombe (Dartford)	14	20	34
Singlewell (Gravesham)	5	28	33
Sheerness West (Swale)	11	21	32
Total	112	268	380
Margate Central	5	22	27

Table 6c. Offender Profile Top 10 Wards July 2010 to June 2011

Ward	Female	Male	Total
Ciftonville West (Thanet)	12	39	51
Shepway North (Maidstone)	9	29	38
Buckland (Dover)	13	24	37
High Street (Maidstone)	8	25	33
Dane Valley (Thanet)	6	25	31
Maxton, Elms Vale and Priory (Dover)	11	20	31
St. Radigunds (Dover)	6	24	30
Singlewell (Gravesham)	7	22	29
Margate Central (Thanet)	4	22	26
Folkestone Harbour (Shepway)	4	21	25
Total	80	251	331

APPENDIX 6

Table 6d. First Time Entrants to the Youth Justice System by District

District	April 2009 to March 2010			April 2010 to March 2011			% change
	Female FTEs	Male FTEs	All FTEs	Female FTEs	Male FTEs	All FTEs	
Ashford	55	86	141	31	70	101	-28.4
Canterbury	32	85	117	37	85	122	4.3%
Dartford	37	90	127	27	41	68	-46.5%
Dover	70	116	186	51	91	142	-23.7%
Gravesham	51	100	151	35	96	131	-13.2%
Maidstone	77	116	193	20	76	96	-50.3%
Sevenoaks	38	66	104	20	46	66	-36.5%
Shepway	68	105	173	39	103	142	-17.9%
Swale	97	146	243	53	120	173	-28.8%
Thanet	66	147	213	43	130	173	-18.8%
Tonbridge & Malling	57	82	139	43	87	130	-6.5%
Tunbridge Wells	31	67	98	30	59	89	-9.2%
No Fixed Abode/NK	1	4	5	1	5	6	20.0%
Total	680	1210	1890	430	1009	1439	-23.9%

APPENDIX 6

Table 6e. First Time Entrants to the Youth Justice System in Thanet

First Time Entrants to the Youth Justice System in Thanet			
Thanet Wards	Apr09 - Mar 10	Apr10 - Mar 11	Grand Total
Cliftonville West	21	22	43
Dane Valley	19	16	35
Margate Central	18	12	30
Newington	14	10	24
Eastcliff	10	13	23
Westgate-on-Sea	11	12	23
Central Harbour	13	8	21
Salmestone	12	9	21
Sr Moses Montefiore	12	9	21
Northwood	10	7	17
Birchington South	9	7	16
Cliftonville East	12	4	16
Viking	8	6	14
St Peters	8	5	13
Garlinge	4	7	11
Beacon Road	6	4	10
Nethercourt	6	4	10
Westbrook	5	5	10
Thanet Villages	6	2	8
Bradstowe	2	4	6
Cliffsend and Pegwell	4	2	6
Birchington North	1	2	3
Ward not known		3	3
Kingsgate	2		2
Grand Total	213	173	386

APPENDIX 6

Table 6f. Number of Offences by District April 2010 to March 2011

District	1 April 2009 to 31 March 2010	1 April 2010 to 31 March 2011	% Difference
Ashford	391	331	-15.35%
Canterbury	370	368	-0.54%
Dartford	310	255	-17.74%
Dover	521	384	-26.30%
Gravesham	431	443	2.78%
Maidstone	496	391	-21.17%
Sevenoaks	275	182	-33.82%
Shepway	479	434	-9.39%
Swale	622	506	-18.65%
Thanet	772	664	-13.99%
Tonbridge & Malling	326	356	9.20%
Tunbridge Wells	248	254	2.42%
No Fixed Abode	7	15	114.29%
Out of County	893	778	-12.88%
Unknown	1	2	100.00%
Total	6142	5363	-12.68%

APPENDIX 6

Table 6g. Offences in Thanet by Ward April 2010 to March 2011

Offences in Thanet			
Thanet Ward	1 April 2009 - 31 March 2010	1 April 2010 - 31 March 2011	% Difference
Ciftonville West	114	95	-16.67%
Margate Central	67	59	-11.94%
Dane Valley	53	59	11.32%
Central Harbour	55	54	-1.82%
Newington	66	37	-43.94%
Sr Moses Montefiore	50	42	-16.00%
Eastdiff	42	41	-2.38%
Westgate-on-Sea	50	30	-40.00%
Northwood	38	40	5.26%
Salmestone	28	29	3.57%
Viking	24	30	25.00%
Beacon Road	34	14	-58.82%
Garlinge	16	26	62.50%
Westbrook	17	20	17.65%
St Peters	20	11	-45.00%
Cliffsend and Pegwell	18	10	-44.44%
Ciftonville East	19	9	-52.63%
Thanet Villages	11	17	54.55%
Birchington South	14	12	-14.29%
Bradstowe	16	9	-43.75%
Nethercourt	5	18	260.00%
Birchington North	8	2	-75.00%
Kingsgate	7		n/a
Grand Total	772	664	-13.99%

APPENDIX 7

Looked After Children and Care Leavers

Table 7a. Looked After Children from Other Local Authorities

District	August 2010	August 2011
Swale	217	229
Thanet	237	222
Canterbury	158	162
Ashford	132	122
Dartford	98	112

Source KCC Management Information Unit, October 2011

In August 2001 there were 1358 OLA LAC placed in Kent in August 2011 by over 80 LAs, including London Boroughs.

Table 7b. Kent 16+ and Care Leavers

	Oct 2010	Oct 2011
Number 16+ LAC East Kent	99	132
Number Care leavers East Kent	222	215
Number 16+ LAC Thanet	43	52
Number Care Leavers Thanet	78	74
Number 16+ LAC Margate	15	22
Number Care Leavers Margate	34	34

Source Catch 22 16plus, October 2011

Table 7c. Common Assessment Framework (CAF)

Local Children's Trust target to increase numbers of children subject to common assessment and to reduce referrals to Social Services which do not go through to initial assessment (this data is not yet available)

CAFs completed				
Year	Totals	Age 0-7	Age 8-13	Age 14-19
2009-10	140	46	82	12
2010-11	161	46	91	24
2011 (to end Sept)	102	39	54	9
	403	131	227	45

Source KCC Early Intervention Co-ordinator (Thanet), October 2011

APPENDIX 8

National Government Policy Framework

- 8.1 There are a number of areas of emerging government legislation which present opportunities and threats to socio-economic regeneration efforts in Margate, including:
- Local Enterprise Partnerships (LEPs) and Enterprise Zones
 - Localism Bill
 - Welfare Reform Bill
 - Public Service Reform White Paper
 - Health and Social Care Bill
- 8.2 **Local Enterprise Partnerships (LEPs) and Enterprise Zones** – in the wake of the Pfizer closure at Sandwich, East Kent's designated Enterprise zone will get simplified planning rules, super-fast broadband and tax breaks for businesses to promote growth.
- 8.3 The **Localism Bill** proposes new freedoms and flexibilities for local government, and new rights and powers for local communities. The Bill introduces a right for local communities to influence planning decisions through Neighbourhood Plans and the power to deliver developments through community right to build. 'Meanwhile' uses for empty buildings allows a vacant space to be put into good use for the benefit of the community while a permanent solution is found – for example new shops, business start ups, community projects.
- 8.4 Other areas of relaxation in planning laws carry risks for the housing intervention in Margate, in particular regulations on houses in multiple occupation (HMOs). Oversupply of HMOs in Cliftonville currently attracts a large population of single vulnerable people. The legal framework has now been further eased so that change of use from a dwelling house to a smaller HMO does not require planning permission.
- 8.5 Reform of homelessness legislation in The Localism Bill will also impact adversely on coastal areas. It will allow local authorities to meet their homelessness duty by placing households in private sector homes. Under the current rules, people who become homeless are able to refuse offers of accommodation in the private rented sector, and insist that they are housed in temporary accommodation until a long term social home becomes available. In the context of significant rises in homelessness in many London boroughs in January-March 2011, and Housing Benefit reform, out-of-area placement of homeless households in cheaper private rented accommodation is inevitable.
- 8.6 The **Welfare Reform Bill** signals a sea change in the existing welfare system with the introduction of Universal Credit, a single streamlined benefit, reforms of Employment and Support Allowance (formerly Incapacity Benefit) and Housing Benefit. These changes will have very significant impacts in the two wards given the high levels of welfare benefits dependency, entrenched worklessness and incapacity.
- 8.7 Housing Benefit caps, combined with changes to HMO and homelessness legislation are also predicted to stimulate further migration of disadvantaged households to coastal and low cost housing areas.
- 8.8 The government's **Public Service Reform White Paper** will be the motor driving the coalition's vision for the **Big Society**. This agenda includes creating and expanding mutuals, co-operatives, charities and social enterprises and giving communities and

APPENDIX 8

public employees more involvement in running public services. The white paper will build on the major reforms in the NHS, schools, welfare and justice, inextricably linked to the government's deficit reduction plan and the need to deliver more efficiency and value for money.

- 8.9 Further work needs to be undertaken on neighbourhood planning in Margate Central and Cliftonville West on a multi-agency basis which addresses the potential of the Public Services reform agenda in reconfiguring provision at locality level through voluntary, community and faith groups.
- 8.10 Transformational reform in commissioning and provision of NHS in the **Health and Social Care Bill** has major implications for Margate, where health inequalities across all age groups are cause for concern, and the needs of vulnerable adults and older people place existing services under significant pressure.