

20/06/2005 - 20/07/2005 =  
 20/10/2005 - 20/11/2005 =  
 20/06/2006 - 20/07/2006 =  
 20/10/2006 - 20/11/2006 =

**A1**  
**B1**  
**A2**  
**B2**

A1 & B1 are 2005. A2/B2 are 2006.  
 A2/B2 are pre and post co-location, A1/B1 are just there to show  
 the same time period the previous year.

**Base Appointments - Weekdays Only**

**Pre Co-location**

<b>A1</b>	From HB	From Whit	Combined	Total
at Herne Bay base	84	47	131	196

% of HB base appts. from HB/Whit area: **66.8%**

<b>B1</b>	From HB	From Whit	Combined	Total
at Herne Bay base	43	26	69	120

% of HB base appts. from HB/Whit area: **57.5%**

<b>A2</b>	From HB	From Whit	Combined	Total
at Herne Bay base	58	33	91	154

% of HB base appts. from HB/Whit area: **59.1%**

**Post Co-location**

<b>B2</b>	From HB	From Whit	Combined	Total
at Canterbury base	12	33	45	132

% of Cant base appts from HB/Whit area: **34.1%**

<b>July-June</b>	2005 (A1)	2006 (A2)	Variance	% change
Base appts.(HB & Cant.)	131	91	-40	-30.5%

<b>Oct-Nov</b>	2005 (B1)	2006 (B2)	Variance	% change
Base appts.(HB & Cant.)	69	45	-24	-34.8%

**Home Visits - Weekdays Only**

**Pre Co-location**

<b>A1</b>	To Cant.	To HB	To Whit.	Combined	Total
	68	43	26	137	153
% of total -	44.4%	28.1%	17.0%		

<b>B1</b>	To Cant.	To HB	To Whit.	Combined	Total
	54	32	32	118	134
% of total -	40.3%	23.9%	23.9%		

<b>A2</b>	To Cant.	To HB	To Whit.	Combined	Total
	51	38	26	115	123
% of total -	41.5%	30.9%	21.1%		

**Post Co-location**

<b>B2</b>	To Cant.	To HB	To Whit.	Combined	Total
	33	35	31	99	132
% of total -	25.0%	26.5%	23.5%		

<b>July-June</b>	2005 (A1)	2006 (A2)	Variance	% change
Home visits (HB & Cant.)	137	115	-22	-16.1%

<b>Oct-Nov</b>	2005 (B1)	2006 (B2)	Variance	% change
Home visits (HB & Cant.)	118	99	-19	-16.1%

20/06/2005 - 20/07/2005 = **A1**  
 20/10/2005 - 20/11/2005 = **B1**  
 20/06/2006 - 20/07/2006 = **A2**  
 20/10/2006 - 20/11/2006 = **B2**

A1 & B1 are 2005. A2/B2 are 2006.  
 A2/B2 are pre and post co-location, A1/B1 are just there to show the same time period the previous year.

**Base Appointments - Entire Week**

**Pre Co-location**

<b>A1</b>	From HB	From Whit	Combined	Total
at Herne Bay base	262	163	425	723

% of HB base appts. from HB/Whit area: **58.8%**

<b>B1</b>	From HB	From Whit	Combined	Total
at Herne Bay base	232	165	397	679

% of HB base appts. from HB/Whit area: **58.5%**

<b>A2</b>	From HB	From Whit	Combined	Total
at Herne Bay base	174	121	295	519

% of HB base appts. from HB/Whit area: **56.8%**

**Post Co-location**

<b>B2</b>	From HB	From Whit	Combined	Total
at Herne Bay base	132	83	215	255

% of HB base appts from HB/Whit area: **84.3%**

<b>B2</b>	From HB	From Whit	Combined	Total
at Canterbury base	43	54	97	413

% of Cant base appts from HB/Whit area: **23.5%**

<b>July-June</b>	2005 (A1)	2006 (A2)	Variance	% change
Base appts.(HB & Cant.)	425	295	-130	-30.6%

<b>Oct-Nov</b>	2005 (B1)	2006 (B2)	Variance	% change
Base appts.(HB & Cant.)	397	312	-85	-21.4%

**Home Visits - Entire Week**

**Pre Co-location**

<b>A1</b>	To Cant.	To HB	To Whit.	Combined	Total
	189	93	77	359	414
<b>% of total -</b>	45.7%	22.5%	18.6%		

<b>B1</b>	To Cant.	To HB	To Whit.	Combined	Total
	190	117	93	400	451
<b>% of total -</b>	42.1%	25.9%	20.6%		

<b>A2</b>	To Cant.	To HB	To Whit.	Combined	Total
	129	93	65	287	318
<b>% of total -</b>	40.6%	29.2%	20.4%		

**Post Co-location**

<b>B2</b>	To Cant.	To HB	To Whit.	Combined	Total
	143	120	91	354	405
<b>% of total -</b>	35.3%	29.6%	22.5%		

<b>July-June</b>	2005 (A1)	2006 (A2)	Variance	% change
Home visits (HB & Cant.)	359	287	-72	-20.1%

<b>Oct-Nov</b>	2005 (B1)	2006 (B2)	Variance	% change
Home visits (HB & Cant.)	400	354	-46	-11.5%

**Patient Call Trends 2005 & 2006**

	Jan-05	Feb-05	Mar-05	Apr-05	May-05	Jun-05	Jul-05	Aug-05	Sep-05	Oct-05	Nov-05	Dec-05	Total
<b>Base appts</b>	3363	2457	3165	2481	2966	2171	2394	1972	1764	2113	1658	2388	28892
<b>Home visits</b>	1454	969	1208	1028	1095	750	915	780	796	929	885	1047	11856
<b>Other</b>	3387	3000	3458	3092	2961	2485	2663	2857	3116	3762	3440	4675	38896
<b>Total</b>	8204	6426	7831	6601	7022	5406	5972	5609	5676	6804	5983	8110	79644

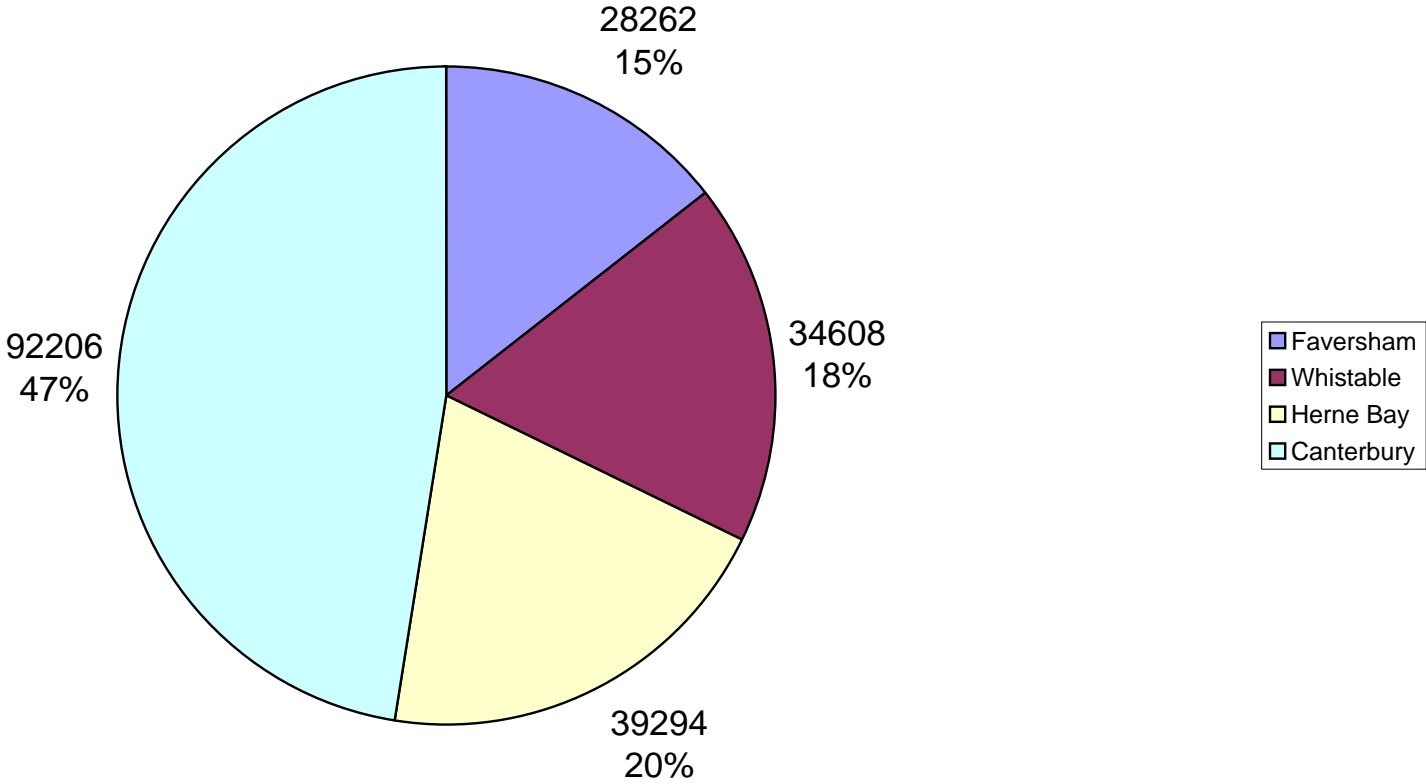
	Jan-06	Feb-06	Mar-06	Apr-06	May-06	Jun-06	Jul-06	Aug-06	Sep-06	Oct-06	Nov-06	Dec-06	Total
<b>Base appts</b>	2249	1842	1676	2194	1961	1476	1756	1365	1419	1546	1422	2343	21249
<b>Home visits</b>	976	781	829	928	865	756	800	755	736	762	661	978	9827
<b>Other</b>	4374	4095	4060	4510	3739	3150	3576	3326	3270	3499	3161	4612	45372
<b>Total</b>	7599	6718	6565	7632	6565	5382	6132	5446	5425	5807	5244	7933	76448

Comparison:	Jan	Feb	Mar	Apr	May	Jun	Jul	Aug	Sep	Oct	Nov	Dec	Total
<b>Base appts</b>	-1114	-615	-1489	-287	-1005	-695	-638	-607	-345	-567	-236	-45	-7643
<b>Home visits</b>	-478	-188	-379	-100	-230	6	-115	-25	-60	-167	-224	-69	-2029
<b>Other</b>	987	1095	602	1418	778	665	913	469	154	-263	-279	-63	6476
<b>Total</b>	-605	292	-1266	1031	-457	-24	160	-163	-251	-997	-739	-177	-3196

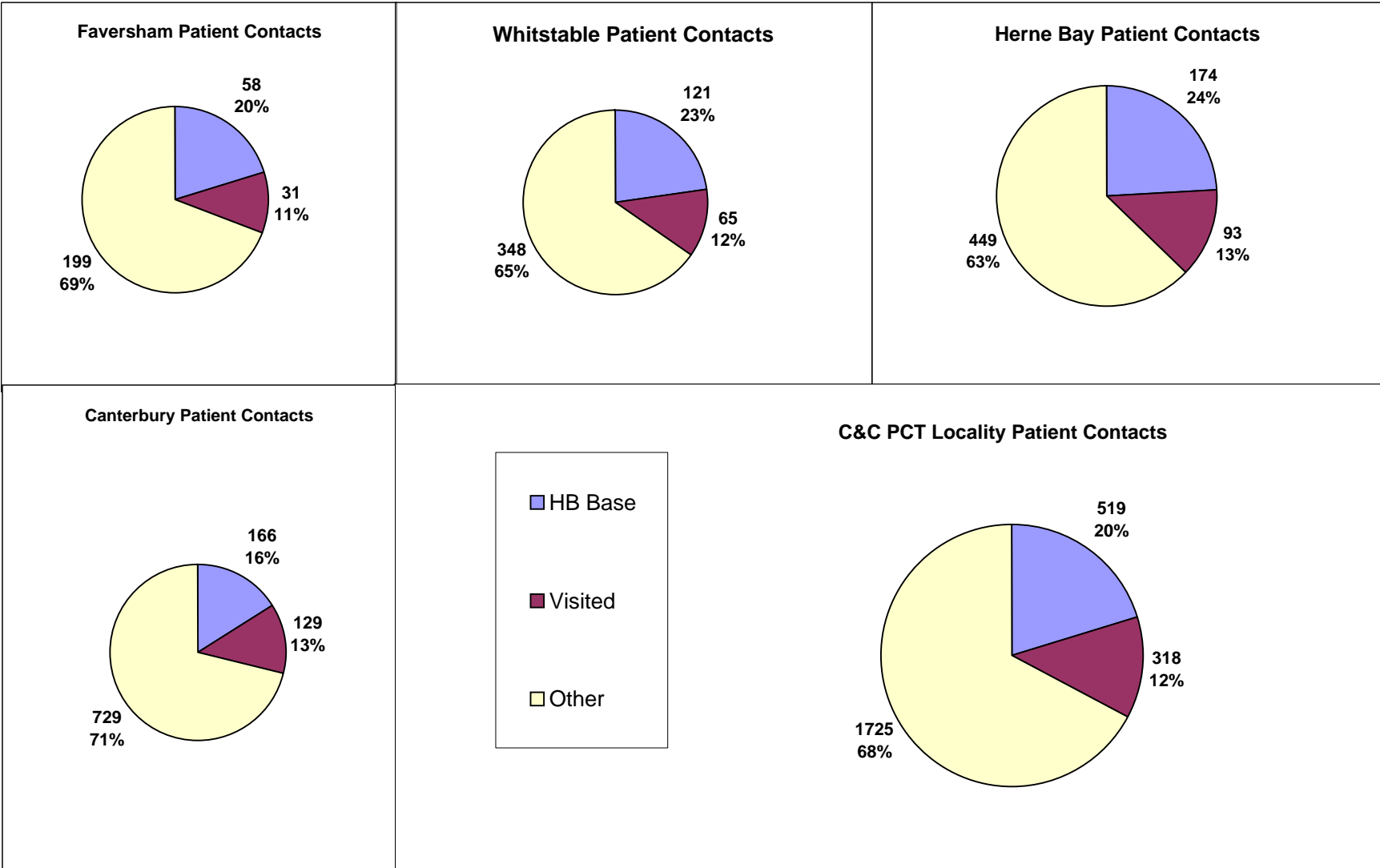
Comparison %	Jan	Feb	Mar	Apr	May	Jun	Jul	Aug	Sep	Oct	Nov	Dec	Total
<b>Base appts</b>	-33.1%	-25.0%	-47.0%	-11.6%	-33.9%	-32.0%	-26.6%	-30.8%	-19.6%	-26.8%	-14.2%	-1.9%	-26.5%
<b>Home visits</b>	-32.9%	-19.4%	-31.4%	-9.7%	-21.0%	0.8%	-12.6%	-3.2%	-7.5%	-18.0%	-25.3%	-6.6%	-17.1%
<b>Other</b>	29.1%	36.5%	17.4%	45.9%	26.3%	26.8%	34.3%	16.4%	4.9%	-7.0%	-8.1%	-1.3%	16.6%
<b>Total</b>	-7.4%	4.5%	-16.2%	15.6%	-6.5%	-0.4%	2.7%	-2.9%	-4.4%	-14.7%	-12.4%	-2.2%	-4.0%

"Other" includes 999, A+E, DN Messages, Doctor Advice, and Nurse Advice

Registered Patients By Surgery Location



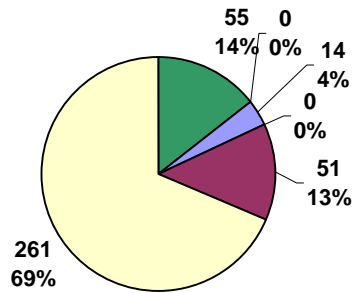
Pre Co-Location 20/10/2006-20/11/2006



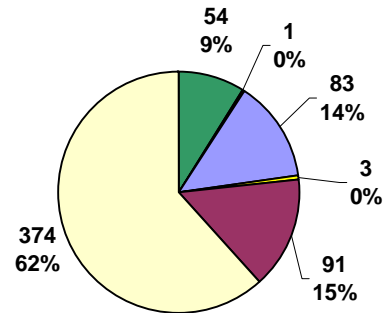
"Other" includes 999, A+E, DN Messages, Doctor Advice, and Nurse Advice

Post Co-Location 20/10/2006 - 20/11/2006

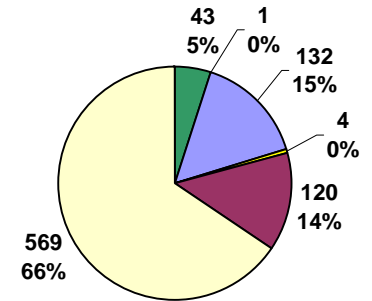
Faversham Patient Contacts



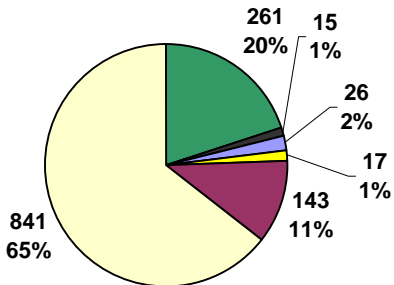
Whitstable Patient Contacts



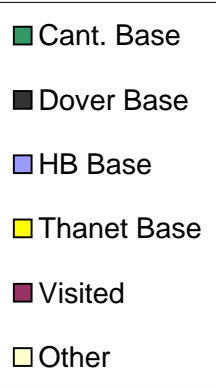
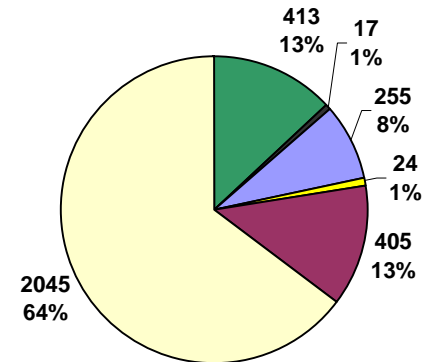
Herne Bay Patient Contacts



Canterbury Patient Contacts



C&C PCT Locality Patient Contacts



"Other" includes 999, A+E, DN Messages, Doctor Advice, and Nurse Advice