

NB, figures are an average of each day recorded and have not ben adjusted to a "virtual day" these char  
 Queens Road Maidstone NB Count info for weekends has been removed from data

WESTBOUND AVERAGE - BEFORE DATA

Time	Total	Vpp 85	Mean
0000	7.6	37.1	32.5
0100	3.2	#DIV/0!	32.5
0200	2.4	#DIV/0!	30.5
0300	4.2	#DIV/0!	27.6
0400	3.2	#DIV/0!	31.1
0500	6.8	#DIV/0!	33.2
0600	45.4	36.5	31.2
0700	139.8	32.0	27.8
0800	352.6	26.6	21.3
0900	195.0	31.3	27.0
1000	143.2	32.1	27.9
1100	170.2	31.4	27.5
1200	168.4	32.1	28.2
1300	158.2	31.9	28.1
1400	218.6	29.3	22.3
1500	347.8	28.0	21.4
1600	310.6	30.5	26.4
1700	330.2	30.8	27.4
1800	260.2	31.8	28.2
1900	191.2	31.8	28.4
2000	105.0	32.9	29.0
2100	67.6	35.5	30.8
2200	44.4	35.1	30.4
2300	30.2	35.4	31.1
<b>07-19</b>	<b>2794.8</b>	<b>30.6</b>	<b>25.5</b>
<b>06-22</b>	<b>3204.0</b>	<b>31.1</b>	<b>26.0</b>
<b>06-00</b>	<b>3278.6</b>	<b>31.2</b>	<b>26.1</b>
<b>00-00</b>	<b>3306.0</b>	<b>31.2</b>	<b>26.2</b>

EASTBOUND AVERAGE - BEFORE DATA

Time	Total	Vpp 85	Mean
0000	6.6	#DIV/0!	29.2
0100	4.8	#DIV/0!	26.2
0200	1.4	#DIV/0!	28.6
0300	2.4	#DIV/0!	31.5
0400	6.8	#DIV/0!	28.4
0500	27.0	35.8	31.4
0600	80.0	33.7	29.8
0700	219.2	31.0	27.2
0800	472.0	26.9	21.0
0900	181.8	31.0	27.2
1000	152.8	31.6	27.8
1100	154.8	31.7	27.7
1200	151.0	31.8	28.0
1300	146.4	32.1	28.1
1400	205.0	28.8	22.7
1500	268.6	28.4	21.6
1600	198.4	30.6	26.8
1700	222.6	30.7	27.0
1800	189.6	31.4	27.8
1900	145.6	31.6	27.9
2000	84.4	33.2	29.2
2100	50.2	33.4	29.5
2200	34.0	32.5	28.7
2300	17.8	32.6	29.3
<b>07-19</b>	<b>2562.2</b>	<b>30.5</b>	<b>25.3</b>
<b>06-22</b>	<b>2922.4</b>	<b>30.8</b>	<b>25.7</b>
<b>06-00</b>	<b>2974.2</b>	<b>30.8</b>	<b>25.8</b>
<b>00-00</b>	<b>3023.2</b>	<b>31.0</b>	<b>25.8</b>

WESTBOUND AVERAGE - AFTER DATA 1

Time	Total	Vpp 85	Mean
0000	5.3	#DIV/0!	32.5
0100	3.5	#DIV/0!	33.0
0200	5.0	#DIV/0!	32.7
0300	6.0	#DIV/0!	30.6
0400	4.0	#DIV/0!	30.4
0500	12.3	36.6	32.0
0600	47.0	35.9	30.7
0700	144.3	32.3	27.7
0800	384.0	26.9	22.6
0900	204.3	31.1	26.6
1000	165.0	31.5	27.6

EASTBOUND AVERAGE - AFTER DATA 1

Time	Total	Vpp 85	Mean
0000	13.8	34.4	30.6
0100	7.8	38.3	31.0
0200	3.3	#DIV/0!	28.4
0300	2.0	#DIV/0!	28.2
0400	5.8	#DIV/0!	29.1
0500	26.8	35.2	30.6
0600	68.5	32.7	28.8
0700	227.8	30.4	26.6
0800	460.3	26.7	21.3
0900	184.5	30.3	27.0
1000	156.8	30.4	26.6

1100	178.3	30.5	27.2
1200	198.8	30.8	27.3
1300	191.3	31.8	28.2
1400	221.3	30.3	24.5
1500	394.5	27.3	21.0
1600	347.5	30.8	26.8
1700	359.0	30.8	27.4
1800	288.5	30.9	27.3
1900	175.0	31.8	28.2
2000	107.0	33.3	29.4
2100	69.5	34.3	29.9
2200	52.0	35.0	30.5
2300	40.0	36.3	31.1
<b>07-19</b>	<b>3076.5</b>	<b>30.4</b>	<b>25.7</b>
<b>06-22</b>	<b>3475.0</b>	<b>30.8</b>	<b>26.1</b>
<b>06-00</b>	<b>3567.0</b>	<b>31.0</b>	<b>26.2</b>
<b>00-00</b>	<b>3603.0</b>	<b>31.0</b>	<b>26.3</b>

1100	158.3	30.8	27.4
1200	152.3	30.8	27.4
1300	164.0	31.4	27.8
1400	214.0	29.7	24.3
1500	260.0	27.2	21.1
1600	215.5	30.6	27.4
1700	258.3	30.8	27.3
1800	206.5	30.8	27.2
1900	151.0	31.7	27.7
2000	75.8	32.1	28.3
2100	47.3	32.9	28.8
2200	52.8	32.5	29.2
2300	68.5	35.1	30.4
<b>07-19</b>	<b>2658.0</b>	<b>30.1</b>	<b>25.4</b>
<b>06-22</b>	<b>3000.5</b>	<b>30.3</b>	<b>25.7</b>
<b>06-00</b>	<b>3121.8</b>	<b>30.5</b>	<b>25.8</b>
<b>00-00</b>	<b>3181.0</b>	<b>30.5</b>	<b>25.9</b>

WESTBOUND AVERAGE - AFTER DATA 2

Time	Total	Vpp 85	Mean
0000	7.0	34.2	32.8
0100	2.4	#DIV/0!	33.0
0200	2.2	#DIV/0!	31.1
0300	5.0	#DIV/0!	28.8
0400	5.4	#DIV/0!	30.9
0500	16.2	39.0	33.3
0600	46.4	37.9	32.9
0700	149.6	34.3	29.4
0800	311.6	28.3	23.4
0900	197.6	31.9	27.6
1000	167.2	32.1	28.3
1100	176.6	32.5	28.5
1200	169.2	32.6	28.5
1300	174.4	32.5	28.8
1400	204.0	31.1	25.1
1500	314.2	28.3	21.1
1600	297.4	32.0	28.1
1700	332.4	33.1	29.7
1800	268.2	33.9	30.2
1900	194.8	33.6	29.7
2000	134.4	34.2	29.5
2100	97.2	34.5	30.1
2200	53.8	34.3	30.3
2300	31.4	36.7	31.7
<b>07-19</b>	<b>2762.4</b>	<b>32.2</b>	<b>27.1</b>
<b>06-22</b>	<b>3235.2</b>	<b>32.6</b>	<b>27.5</b>
<b>06-00</b>	<b>3320.4</b>	<b>32.7</b>	<b>27.6</b>
<b>00-00</b>	<b>3358.6</b>	<b>32.8</b>	<b>27.6</b>

EASTBOUND AVERAGE - AFTER DATA 2

Time	Total	Vpp 85	Mean
0000	7.2	#DIV/0!	31.0
0100	3.6	#DIV/0!	30.9
0200	3.4	#DIV/0!	30.0
0300	1.4	#DIV/0!	28.7
0400	5.8	#DIV/0!	30.3
0500	32.6	36.5	31.5
0600	83.6	35.6	30.9
0700	228.8	32.0	28.1
0800	423.2	27.8	22.4
0900	198.0	30.9	27.5
1000	168.4	30.8	27.2
1100	166.4	30.7	27.2
1200	158.8	32.0	28.3
1300	167.6	32.0	28.2
1400	218.2	30.3	24.9
1500	268.6	28.6	22.1
1600	221.0	32.0	28.3
1700	243.8	33.4	29.6
1800	223.8	33.3	29.5
1900	165.6	33.0	29.4
2000	109.6	33.5	28.9
2100	70.8	33.1	28.9
2200	42.4	33.4	28.8
2300	27.2	33.9	29.4
<b>07-19</b>	<b>2686.6</b>	<b>31.3</b>	<b>26.5</b>
<b>06-22</b>	<b>3116.2</b>	<b>31.8</b>	<b>26.9</b>
<b>06-00</b>	<b>3185.8</b>	<b>31.8</b>	<b>26.9</b>
<b>00-00</b>	<b>3239.8</b>	<b>31.9</b>	<b>27.0</b>

ts give an indication of hourly speeds.

a set as 20mph speed limit only applies on weekdays

Avr Flow					
Time	Before			After 1	
	WEST	EAST	Before Avr	WEST	EAST
0000	7.6	6.6	14.2	5.3	13.8
0100	3.2	4.8	8.0	3.5	7.8
0200	2.4	1.4	3.8	5.0	3.3
0300	4.2	2.4	6.6	6.0	2.0
0400	3.2	6.8	10.0	4.0	5.8
0500	6.8	27.0	33.8	12.3	26.8
0600	45.4	80.0	125.4	47.0	68.5
0700	139.8	219.2	359.0	144.3	227.8
0800	352.6	472.0	824.6	384.0	460.3
0900	195.0	181.8	376.8	204.3	184.5
1000	143.2	152.8	296.0	165.0	156.8
1100	170.2	154.8	325.0	178.3	158.3
1200	168.4	151.0	319.4	198.8	152.3
1300	158.2	146.4	304.6	191.3	164.0
1400	218.6	205.0	423.6	221.3	214.0
1500	347.8	268.6	616.4	394.5	260.0
1600	310.6	198.4	509.0	347.5	215.5
1700	330.2	222.6	552.8	359.0	258.3
1800	260.2	189.6	449.8	288.5	206.5
1900	191.2	145.6	336.8	175.0	151.0
2000	105.0	84.4	189.4	107.0	75.8
2100	67.6	50.2	117.8	69.5	47.3
2200	44.4	34.0	78.4	52.0	52.8
2300	30.2	17.8	48.0	40.0	68.5

85th %					
Time	Before			After 1	
	WEST	EAST	Before Avr	WEST	EAST
0000	37.1	-	37.1		34.4
0100	#DIV/0!	#DIV/0!			38.3
0200	#DIV/0!	#DIV/0!		#DIV/0!	#DIV/0!
0300	#DIV/0!	#DIV/0!		#DIV/0!	#DIV/0!
0400	#DIV/0!	#DIV/0!		#DIV/0!	#DIV/0!
0500	-	35.8	35.8	36.6	35.2
0600	36.5	33.7	35.1	35.9	32.7
0700	32.0	31.0	31.5	32.3	30.4
0800	26.6	26.9	26.7	26.9	26.7
0900	31.3	31.0	31.2	31.1	30.3
1000	32.1	31.6	31.9	31.5	30.4
1100	31.4	31.7	31.5	30.5	30.8
1200	32.1	31.8	31.9	30.8	30.8
1300	31.9	32.1	32.0	31.8	31.4

1400	29.3	28.8	29.1	30.3	29.7
1500	28.0	28.4	28.2	27.3	27.2
1600	30.5	30.6	30.6	30.8	30.6
1700	30.8	30.7	30.7	30.8	30.8
1800	31.8	31.4	31.6	30.9	30.8
1900	31.8	31.6	31.7	31.8	31.7
2000	32.9	33.2	33.1	33.3	32.1
2100	35.5	33.4	34.4	34.3	32.9
2200	35.1	32.5	33.8	35.0	32.5
2300	35.4	32.6	34.0	36.3	35.1

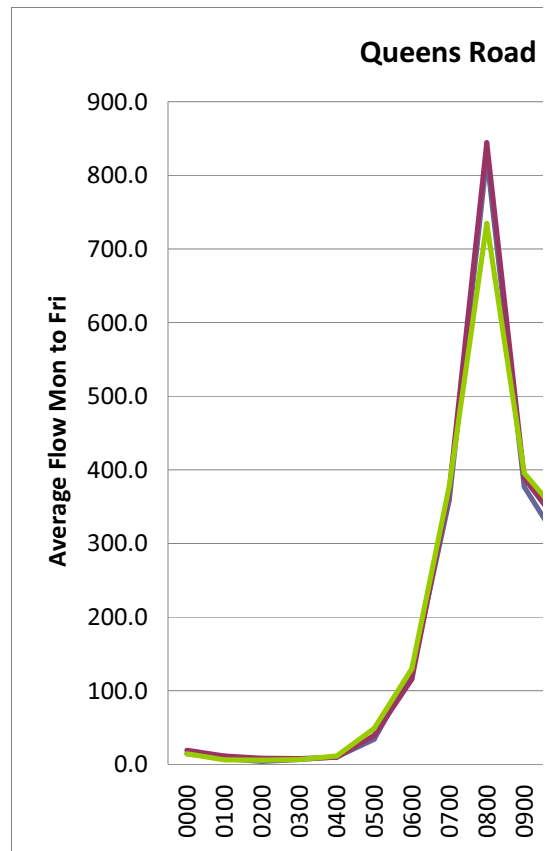
### Mean Speed

Time	Before			After 1	
	WEST	EAST	Before Avr	WEST	EAST
0000	32.5	29.2	30.9	32.5	30.6
0100	32.5	26.2	29.4	33.0	31.0
0200	30.5	28.6	29.6	32.7	28.4
0300	27.6	31.5	29.6	30.6	28.2
0400	31.1	28.4	29.7	30.4	29.1
0500	33.2	31.4	32.3	32.0	30.6
0600	31.2	29.8	30.5	30.7	28.8
0700	27.8	27.2	27.5	27.7	26.6
0800	21.3	21.0	21.1	22.6	21.3
0900	27.0	27.2	27.1	26.6	27.0
1000	27.9	27.8	27.9	27.6	26.6
1100	27.5	27.7	27.6	27.2	27.4
1200	28.2	28.0	28.1	27.3	27.4
1300	28.1	28.1	28.1	28.2	27.8
1400	22.3	22.7	22.5	24.5	24.3
1500	21.4	21.6	21.5	21.0	21.1
1600	26.4	26.8	26.6	26.8	27.4
1700	27.4	27.0	27.2	27.4	27.3
1800	28.2	27.8	28.0	27.3	27.2
1900	28.4	27.9	28.1	28.2	27.7
2000	29.0	29.2	29.1	29.4	28.3
2100	30.8	29.5	30.1	29.9	28.8
2200	30.4	28.7	29.6	30.5	29.2
2300	31.1	29.3	30.2	31.1	30.4

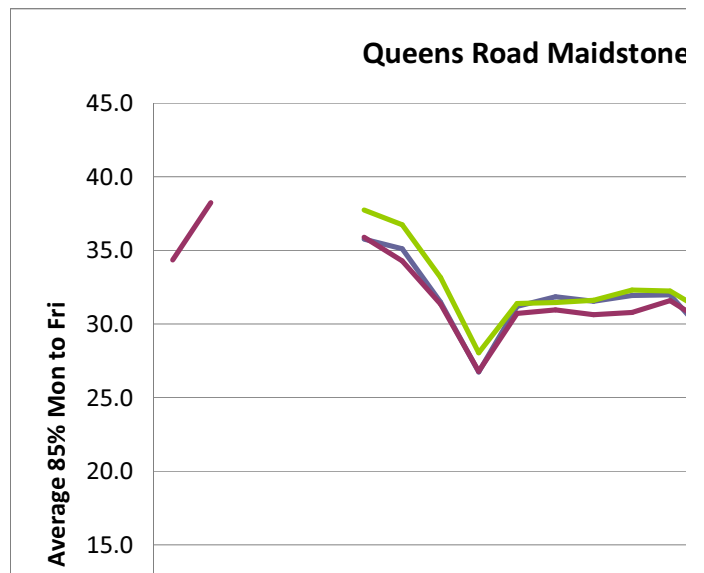
After 2			
After Avr Fl WEST	EAST	After Avr Flow 2	
19.0	7.0	7.2	14.2
11.3	2.4	3.6	6.0
8.3	2.2	3.4	5.6
8.0	5.0	1.4	6.4
9.8	5.4	5.8	11.2
39.0	16.2	32.6	48.8
115.5	46.4	83.6	130.0
372.0	149.6	228.8	378.4
844.3	311.6	423.2	734.8
388.8	197.6	198.0	395.6
321.8	167.2	168.4	335.6
336.5	176.6	166.4	343.0
351.0	169.2	158.8	328.0
355.3	174.4	167.6	342.0
435.3	204.0	218.2	422.2
654.5	314.2	268.6	582.8
563.0	297.4	221.0	518.4
617.3	332.4	243.8	576.2
495.0	268.2	223.8	492.0
326.0	194.8	165.6	360.4
182.8	134.4	109.6	244.0
116.8	97.2	70.8	168.0
104.8	53.8	42.4	96.2
108.5	31.4	27.2	58.6

-262.8

-314.2



After 2			
After Avr 8. WEST	EAST	After Avr 85% 2	
34.4	34.2	#DIV/0!	
38.3	#DIV/0!	#DIV/0!	
	#DIV/0!	#DIV/0!	
	#DIV/0!	#DIV/0!	
	#DIV/0!	#DIV/0!	
35.9	39.0	36.5	37.8
34.3	37.9	35.6	36.8
31.4	34.3	32.0	33.2
26.8	28.3	27.8	28.1
30.7	31.9	30.9	31.4
31.0	32.1	30.8	31.5
30.6	32.5	30.7	31.6
30.8	32.6	32.0	32.3
31.6	32.5	32.0	32.3



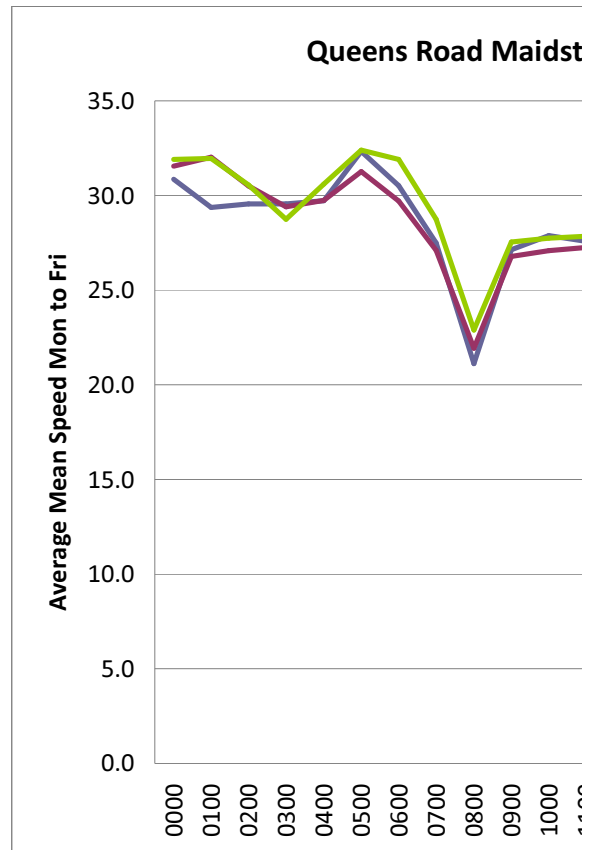
30.0	31.1	30.3	30.7
27.2	28.3	28.6	28.5
30.7	32.0	32.0	32.0
30.8	33.1	33.4	33.3
30.8	33.9	33.3	33.6
31.8	33.6	33.0	33.3
32.7	34.2	33.5	33.9
33.6	34.5	33.1	33.8
33.7	34.3	33.4	33.9
35.7	36.7	33.9	35.3



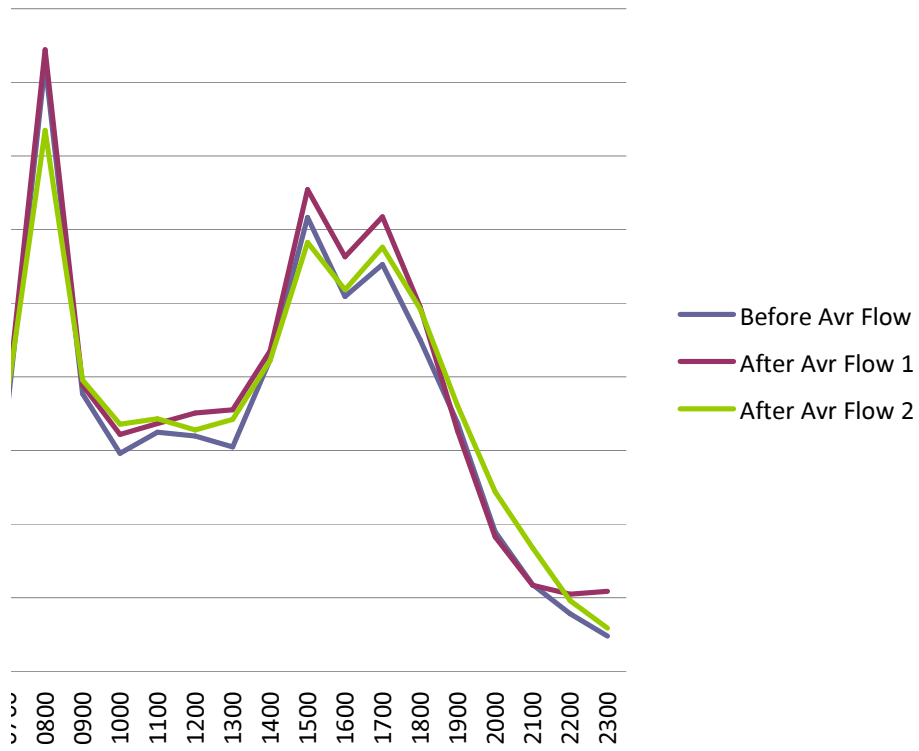
After Avr N WEST	After 2 EAST	After Avr Mean 2	
31.6	32.8	31.0	31.9
32.0	33.0	30.9	32.0
30.5	31.1	30.0	30.6
29.4	28.8	28.7	28.8
29.7	30.9	30.3	30.6
31.3	33.3	31.5	32.4
29.7	32.9	30.9	31.9
27.1	29.4	28.1	28.8
21.9	23.4	22.4	<b>22.9</b>
26.8	27.6	27.5	27.6
27.1	28.3	27.2	27.8
27.3	28.5	27.2	27.9
27.4	28.5	28.3	28.4
28.0	28.8	28.2	28.5
24.4	25.1	24.9	25.0
21.0	21.1	22.1	<b>21.6</b>
27.1	28.1	28.3	28.2
27.3	29.7	29.6	29.7
27.3	30.2	29.5	29.9
27.9	29.7	29.4	29.6
28.9	29.5	28.9	29.2
29.4	30.1	28.9	29.5
29.8	30.3	28.8	29.6
30.8	31.7	29.4	30.6

1.8

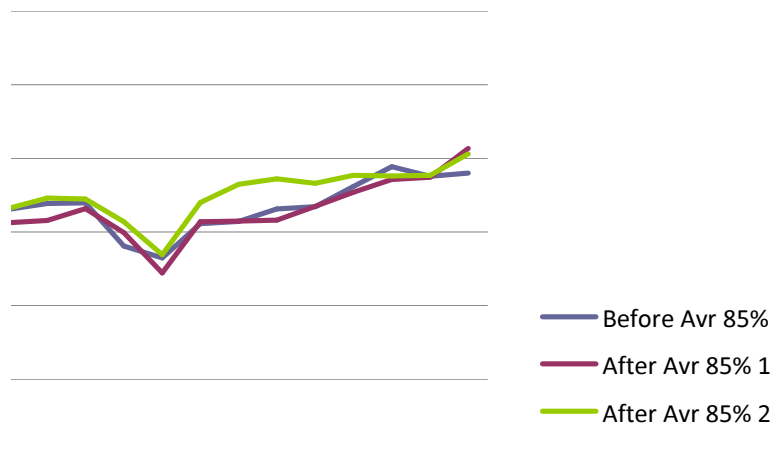
0.1



### s Road Maidstone Average Flow Comparison



### idstone Average 85% Comparison



1100  
1200  
1300  
1400  
1500  
1600  
1700  
1800  
1900  
2000  
2100  
2200  
2300

### Maidstone Average Mean Speed Comparison

